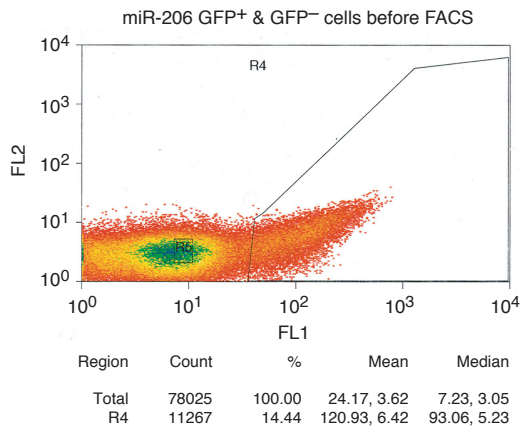
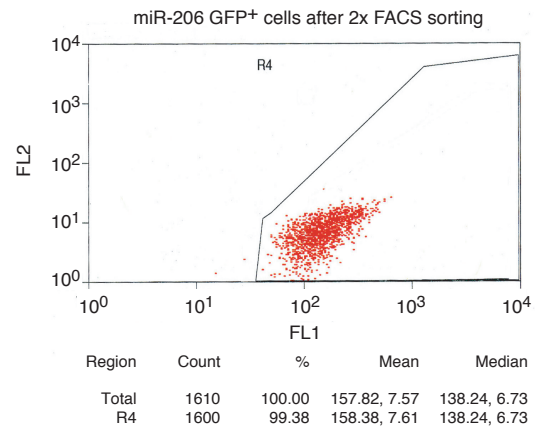


Supplementary Figure 1: Shkumatava et al.

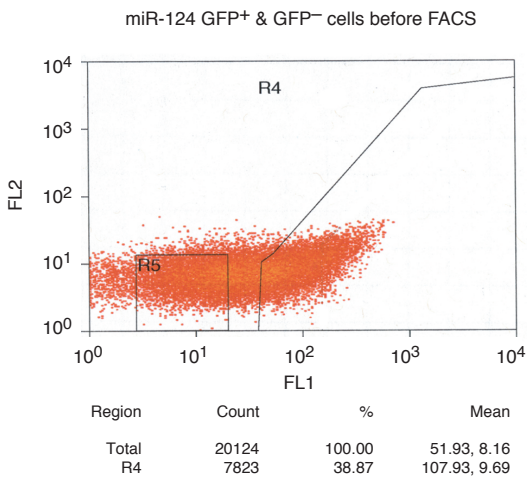
A



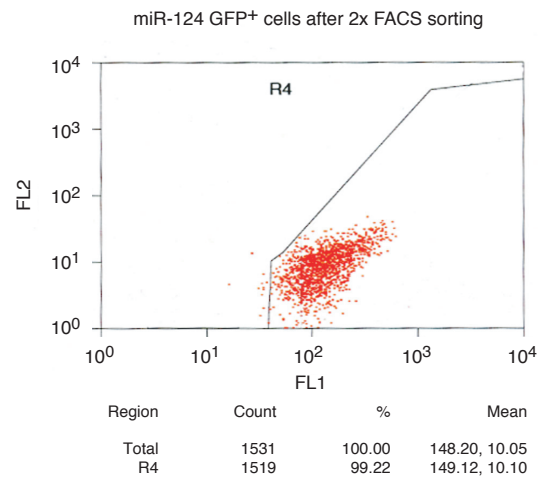
B



C

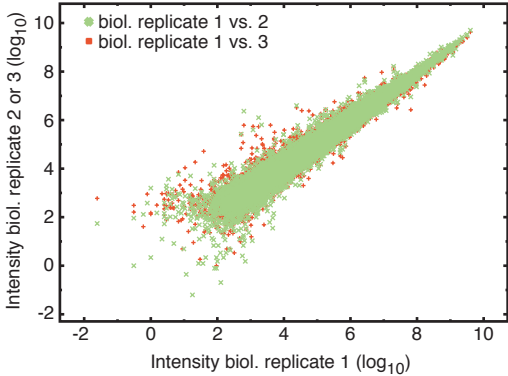


D



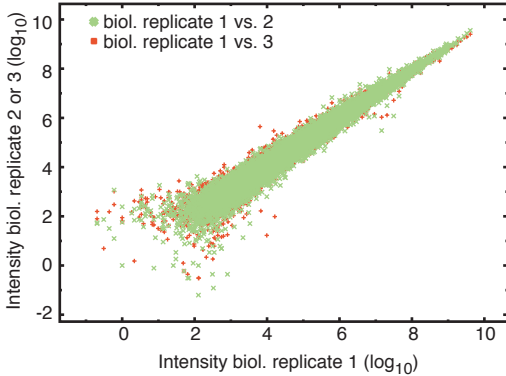
A

miR-206 GFP+

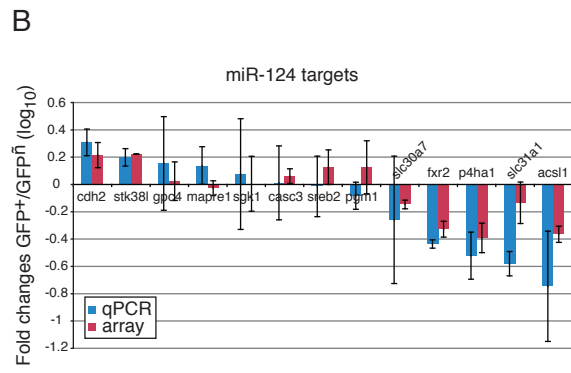
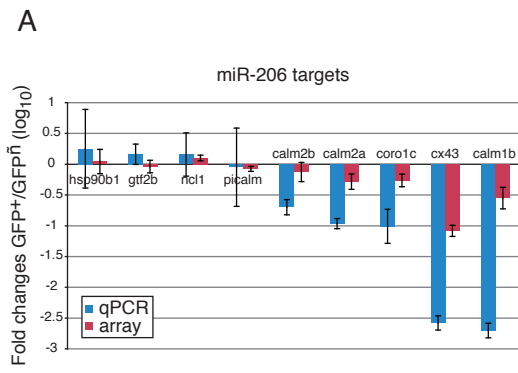


B

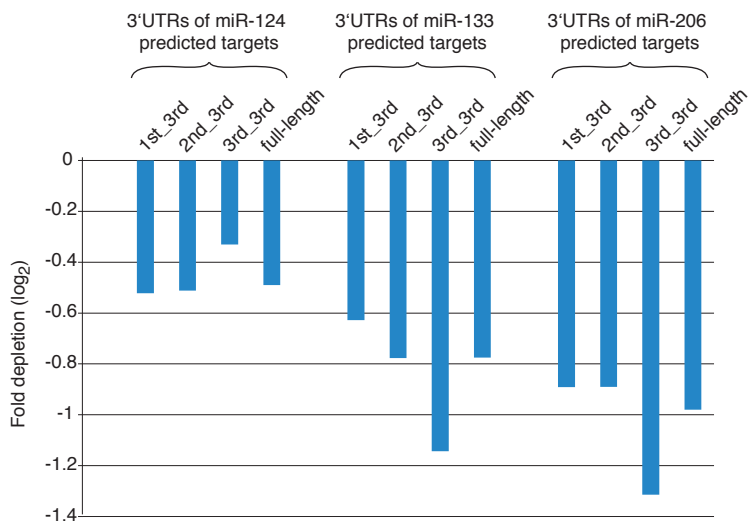
miR-124 GFP+



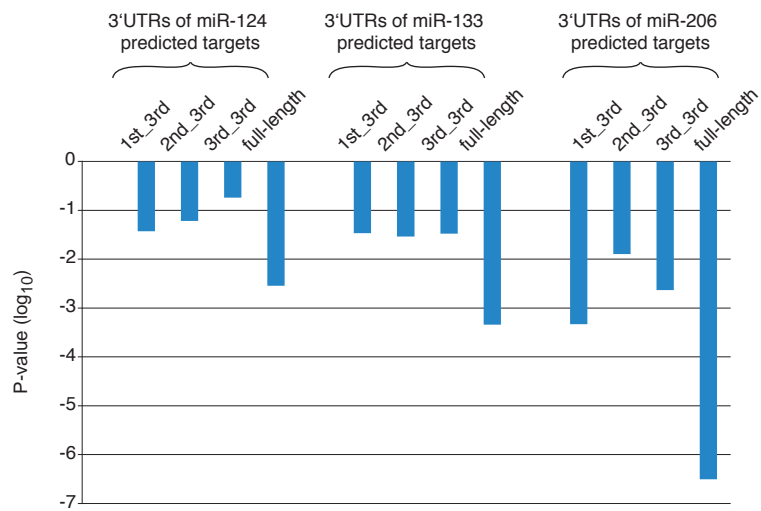
Supplementary Figure 3: Shkumatava et al.



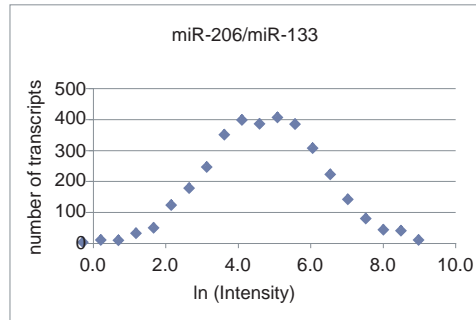
A



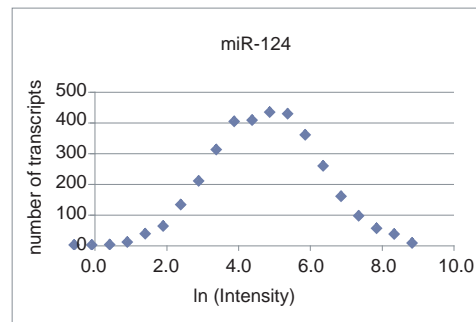
B



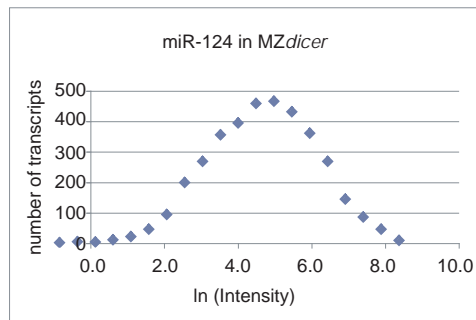
A

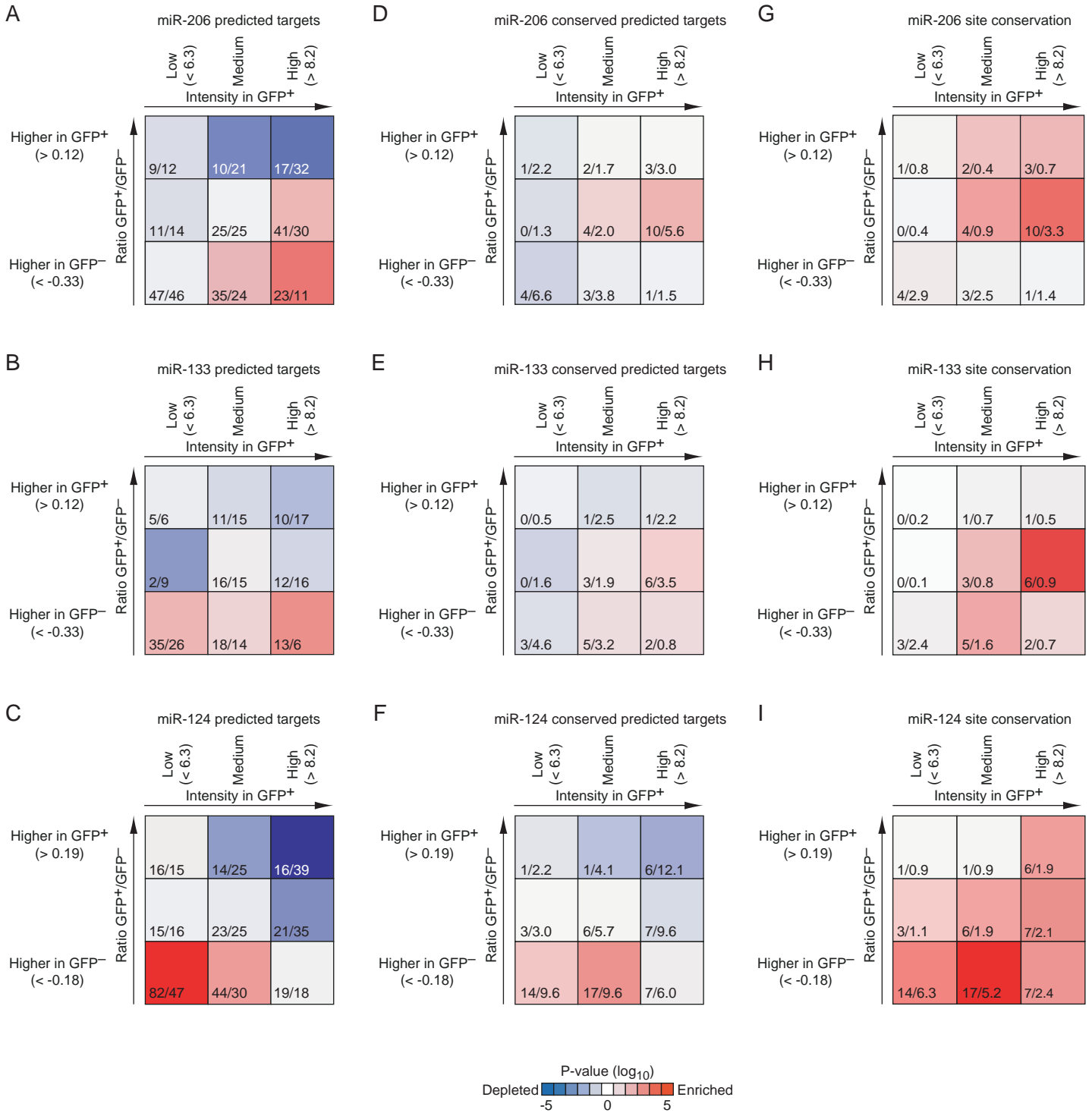


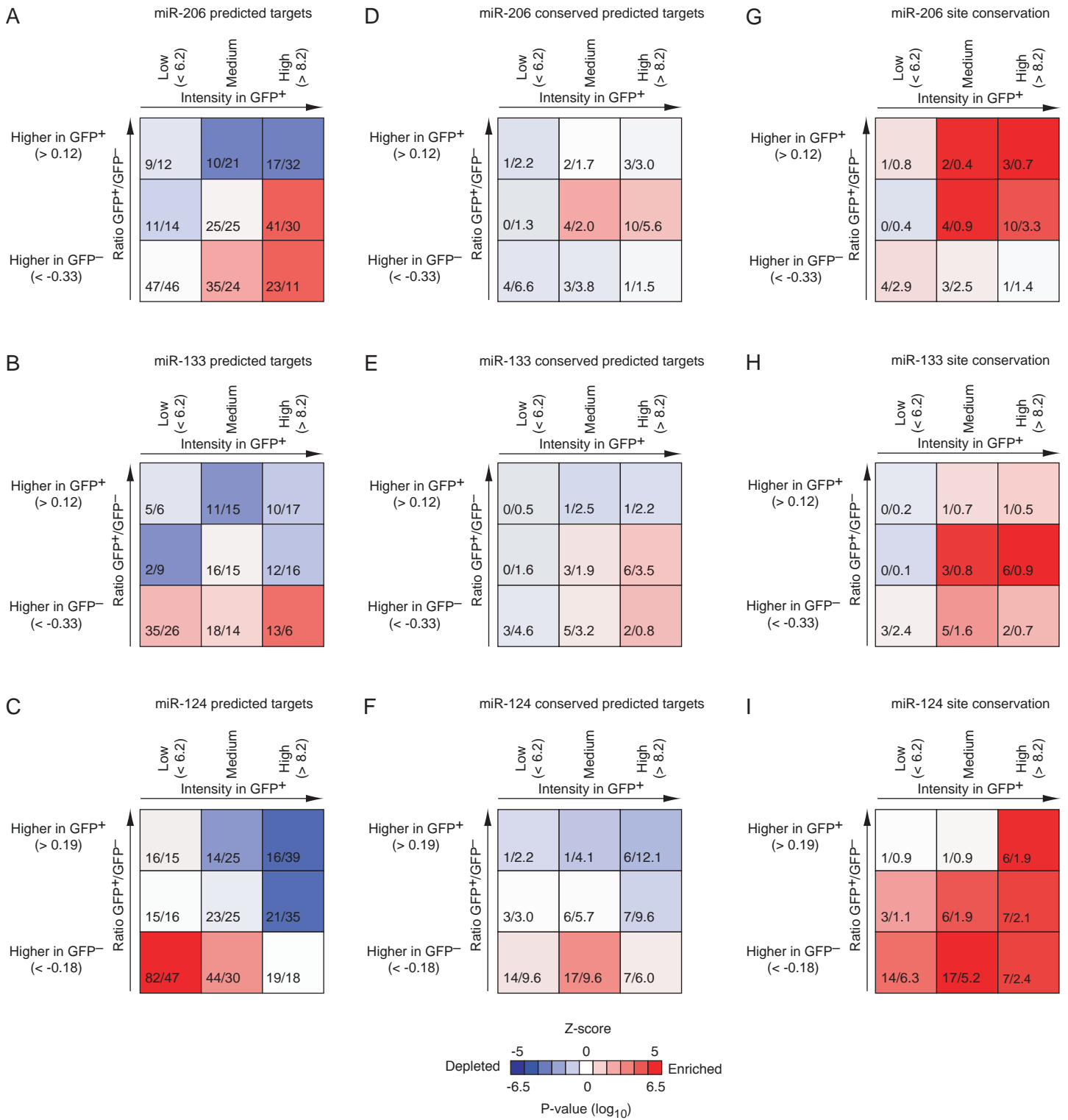
B



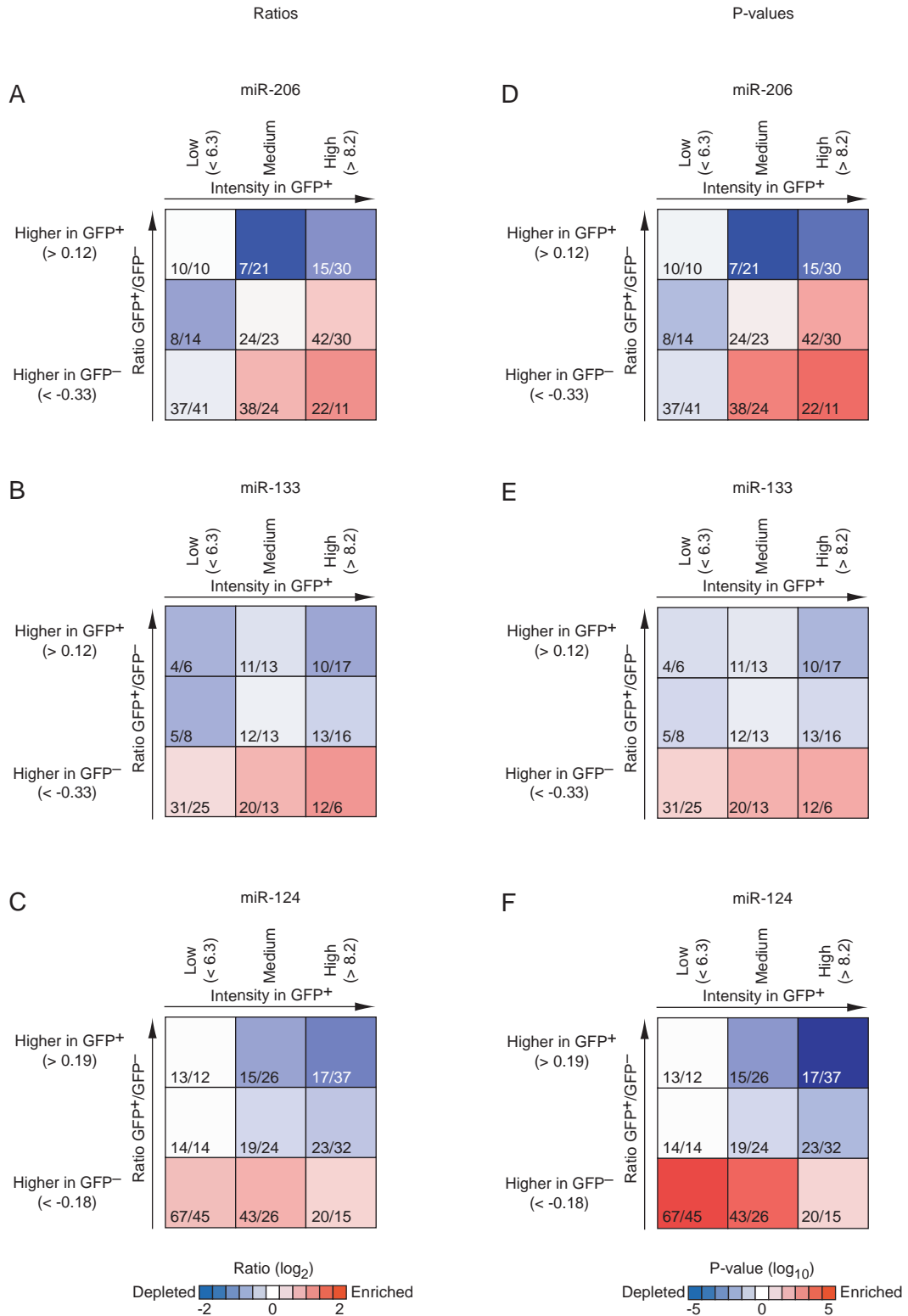
C



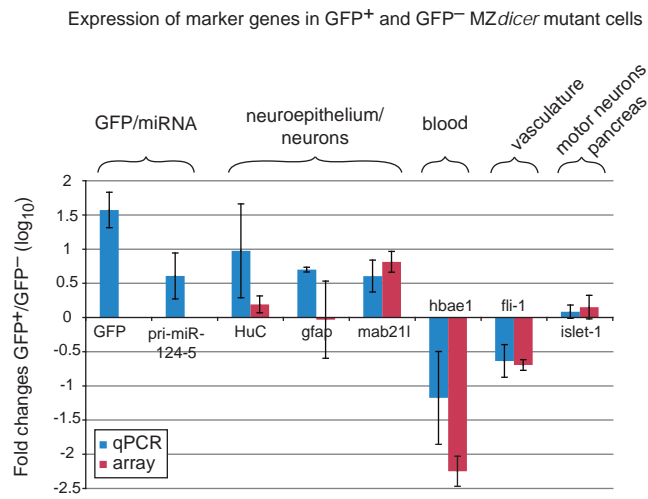




corrected for GC

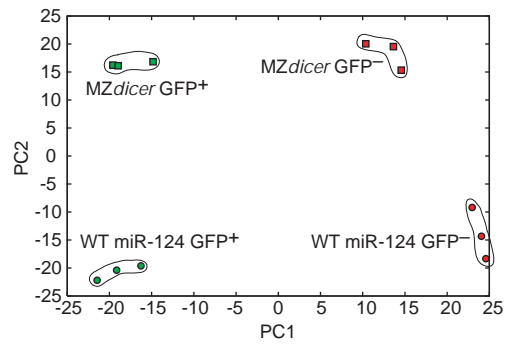


Supplementary Figure 9: Shkumatava et al.

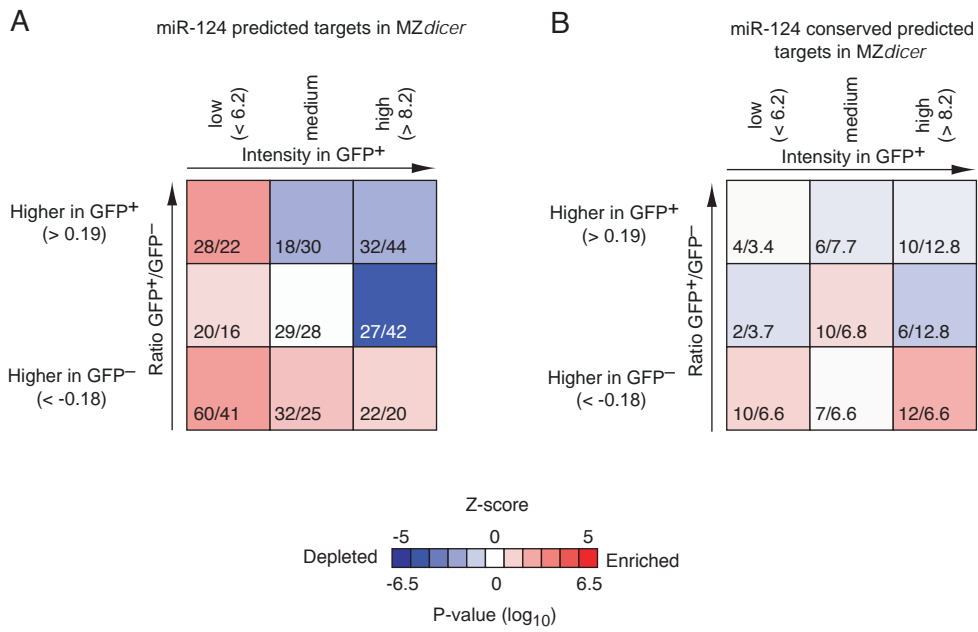


Supplementary Figure 10: Shkumatava et al.

PCA of miR-124 wild-type & miR-124 *MZdicer* microarray data



Supplementary Figure 11: Shkumatava et al.



Supplementary Figure Legends

Figure S1. FACS sorting of miR-206/miR-133 GFP⁺ and miR-124 GFP⁺ cells. (A) GFP⁺ and GFP⁻ cells from miR-206/miR-133 reporter construct before FACS sorting. (B) Diagnostic sorting of miR-206/miR-133 GFP⁺ cells after two rounds of FACS sorting, indicating cell purity of 99.4%. (C) GFP⁺ and GFP⁻ cells from miR-124 reporter construct before FACS sorting. (D) Diagnostic sorting of miR-124 GFP⁺ cells after two rounds of FACS sorting, indicating cell purity of 99.2%.

Figure S2. Correlation between array values for biological replicates for (A) miR-206/miR-133 GFP⁺ cells and (B) for miR-124 GFP⁺ cells.

Figure S3. Correspondence between qRT-PCR and microarray data for (A) miR-206 and (B) miR-124 predicted targets. Blue bars show log₁₀ fold changes between GFP⁺ and GFP⁻ cells by qRT-PCR. Red bars show log₁₀ fold changes between GFP⁺ and GFP⁻ cells by microarrays. Error bars indicate standard deviations between three biological replicates.

Figure S4. Depletion of predicted miRNA targets in GFP⁺ cells dependent on target site positions in 3'UTRs. For each transcript with a unique continuous 3'UTR we calculated enrichment/depletion of targets in GFP⁺ cells as in Figure 4 considering all sites (full-length) or only sites at specific locations in the 3'UTRs (1st third adjacent to the coding sequence, 2nd third, and 3rd third close to the end of the 3'UTR). We find depletion of targets independent of the location of sites, indicating that alternative poly-adenylation does not influence our conclusions. (A) Fold depletion in log₂ (B) P-values in log₁₀. Note that P-values are more dependent on the number of sites, which explains the more significant P-values for full-length 3'UTRs at similar depletion levels.

Figure S5. Distribution of expression intensities (natural log) in (A) miR-206/miR-133 GFP⁺ cells, (B) miR-124 GFP⁺ cells, and (C) MZ*dicer* GFP⁺ cells.

Figure S6. Predicted miRNA target enrichment or depletion for total (left column) and conserved targets (middle column) and target site conservation rate (right column), as in Figure 5 but showing hypergeometric P-values (-log₁₀) instead of fold-enrichment or depletion. Negative values indicate depletion.

Figure S7. Predicted miRNA target enrichment or depletion for total (left column) and conserved targets (middle column) and target site conservation rate (right column), as in Figure 5 but showing Z-scores instead of fold-enrichment (positive values) or depletion (negative values). Z-scores assess the significance with respect to the differences among the shuffled controls, i.e. the trends observed for the individual 7mers.

Figure S8. Predicted miRNA target enrichment or depletion as in Figure 5 left column, but corrected for transcript GC content. All transcripts were divided into 10 bins based on their GC content and then the matrix columns were populated equally with transcripts from each of the 10 bins according to their absolute expression levels. Log ratios (left) and P-values (right) are positive for enrichments and negative for depletions.

Figure S9. Expression of established marker genes in GFP⁺ and GFP⁻ MZ*dicer* mutant cells. Blue bars show fold differences between GFP⁺ and GFP⁻ cells obtained by qRT-PCR. Red bars show fold changes between GFP⁺ and GFP⁻ MZ*dicer* cells in expression of marker genes obtained from microarrays. Error bars indicate standard deviations between three biological replicates.

Figure S10. Principle component analysis (PCA) of microarray data from GFP⁺ and GFP⁻ MZ*dicer* and wild-type cells. The intensity vectors for GFP⁺ cells (green) and GFP⁻ cells (red) are projected onto the first two principal components, revealing dense clustering of biological replicates of each condition and substantial separation between conditions.

Figure S11. Predicted miRNA target enrichment or depletion for total (A) and conserved targets (B), as in Figure 6B, C but showing Z-scores instead of fold-enrichment or depletion. Z-scores assess the significance with respect to the differences among the shuffled controls, i.e. the trends observed for the individual 7mers.

Supplementary Table 1: Oligonucleotide sequences

Primer #	Primer name	Primer Sequence
#1	mir-124-5 promoter_forward	TGCTTTGAGGCACGGTTATGGTCCC
#2	mir-124-5 promoter_reverse	CTCGGGCAGCGGCTTTTTGGTCCTG
#3	mir-206-1/mir-133 promoter_forward	CTGCCCCATTAGACTCTTTCTTGACG
#4	mir-206-1/mir-133 promoter_reverse	CCAGAAGAACCCAGACGAAACCCAC
#5	beta-actin_forward	CTCTTCCAGCCTTCCTTCCT
#6	beta-actin_reverse	CTTGCTGACCGTATGCAGAA
#7	beta-catenin_forward	TTGCTGACCGTATGCAGAAG
#8	beta-catenin_reverse	CTCAGACATGCGGAACAGAA
#9	GFP_forward	CCCTCGTGACCACCCTGACCTAC
#10	GFP_reverse	CCTTGATGCCGTTCTTCTGCTTGTC
#11	miR-206-1_forward	TATTTTTCGTCACCGGGAGT
#12	miR-206-1_reverse	CCGTATTCTGCTTCGTTTCG
#13	miR-124-5_forward	GCATCTGAGCTGTGGAAACA

Supplemental Research Data

Shkumatava et al., page 3

#14	miR-124-5_reverse	GAAGCATCACGAGAGCATCA
#15	mylz2_forward	CACACGGAGAGGAGAAGGAG
#16	mylz2_reverse	TCCCAGCGAGACAAGTCTTT
#17	tpm1_forward	CCCGTAAGCTGGTGATTGTT
#18	tpm1_reverse	GGACCTTTCAGCGAACTCAG
#19	elavl3_forward	CGTCACCATGACCAACTACG
#20	elavl3_reverse	TCCCCCTGCATGTTAAAGAG
#21	gfap_forward	GAGATGATGGGGCTAAACGA
#22	gfap_reverse	CCTGATAGATGTCCCCCAGA
#23	mab21l1_forward	ACCGTCACCTTGA ACTACCG
#24	mab21l1_reverse	GCACGAAATGAGCTGCAATA
#25	hbae1_forward	AATTTCAAGATTCTGTCCCACAA
#26	hbae1_reverse	GAGAGTTTGGAGCACAGTGAAGT
#27	fli1a_forward	CGTCTTCAGCGCTCTCTTCT
#28	fli1a_reverse	TCGTGCTGCTGTTTTCAATC
#29	isl1_forward	GTGCACAAGCAACCTGAGAA
#30	isl1_reverse	TCGGACTAAGACCCGTCATC
#31	hsp90b1_forward	AAGGCCCTGAAGGAACAAAT
#32	hsp90b1_reverse	CCTGTCTGGTAAGCCTGAGC
#33	gtfllb_forward	ACCATGATCAGCAAGGGAAC
#34	gtfllb_reverse	GCCATGGTGGTGATCTCTTT
#35	ncl_forward	AAACGCTGGCTAGAGGACAA
#36	ncl_reverse	GATGGGCCACAACAGTTTCT
#37	picalm_forward	TTTGGACAAAAGCGGGTTAC
#38	picalm_reverse	GGAGTGCATCCATCTGGTTT
#39	calm2b_forward	CTTCCCCTTCTGTTGCTCTG
#40	calm2b_reverse	TGCACCTCCACATAAAACCA
#41	calm2a_forward	ACACGATCAGGTGCTTGTTG
#42	calm2a_reverse	GGTCTCCACTCTTGCTACGC
#43	coro1c_forward	ATGACCGTGCCAAGAAAATC
#44	coro1c_reverse	TACTTTGAGGTCGCGGTTCT
#45	cx43_forward	GTCGCGTACTTGGATTTGGT
#46	cx43_reverse	CACAGAGAGCCAGACCTTCC
#47	calm1b_forward	TGTGTCGTGGGGTTTTTGTA
#48	calm1b_reverse	GCCAAACATGTTTCGACCTTT
#49	cdh2_forward	TGTGAATCGCGTAAAAGAG
#50	cdh2_reverse	AGCGTGTTGCTCTTGTCTT
#51	sgk_forward	ACAATCCAAACGGAGACGAG

Supplemental Research Data

Shkumatava et al., page 4

#52	sgk_reverse	CATCTTGTGGTGGTGTGTCAGG
#53	casc3_forward	ACCACCCGTTTCTCTGTCAC
#54	casc3_reverse	CTGCTGCTGTATCGTGTGTCG
#55	sreb2_forward	TCATCGAGCGCCCTACTACT
#56	sreb2_reverse	AACAGCATGAAGGCAGTGTG
#57	pgm1_forward	GATCACATCCGGGAGAAAGA
#58	pgm1_reverse	TTTGCAGCATCAGAGTCCAC
#59	slc30A7_forward	GCCCTTTTCCATCATCAGAA
#60	slc30A7_reverse	GGCAAATTCTGCACCTCTTC
#61	fxr2_forward	ACTCTCTGCTGGAGGGTGAA
#62	fxr2_reverse	TCCATAAGGCTTGGTTCCAG
#63	p4ha1_forward	TGAAAGACACCACCAATGGA
#64	p4ha1_reverse	CCCAGCTCATAGCAGTCCTC
#65	slc31A1_forward	ATGTGGAGCTGCTTTTTGCT
#66	slc31A1_reverse	GTACGGTGCCATCAGATCCT

Supplementary Table 2: Target Predictions (7 vertebrate alignment)

Given are the predicted target genes (RefSeq IDs) for miR-124, miR-133, and miR-206 at confidence levels between 0 and 0.9.

miR-124 targets (in alignments of 7 vertebrate genomes)

Confidence: 0.9

NM_201461, NM_199992, NM_212752, NM_001098388, NM_200753, NM_001013562, NM_214806, NM_001083826

Confidence: 0.8

NM_200773, NM_200639, NM_001098388, NM_201301, NM_001001409, NM_131863, NM_001009908, NM_001077259, NM_001007327, NM_001083826, NM_201461, NM_001007403, NM_212687, NM_001007285, NM_001020656, NM_131872, NM_001044911, NM_001013562, NM_131427, NM_001035261, NM_131267, NM_205644, NM_001045447, NM_131856, NM_001002471, NM_198805, NM_199992, NM_001002228, NM_205674, NM_001003781, NM_001099254, NM_201308, NM_001020595, NM_199212, NM_131862, NM_001001816, NM_213104, NM_213478, NM_131665, NM_001089352, NM_131686, NM_213538, NM_001030164, NM_001044709, NM_200753, NM_130941, NM_212906, NM_001014354, NM_214806, NM_212637, NM_199567, NM_201504, NM_199479, NM_001001818, NM_213459, NM_001025526, NM_001040326, NM_131520, NM_213405, NM_001009918, NM_001017640, NM_001013538, NM_001045019, NM_212966, NM_194396, NM_201471, NM_001077370, NM_001100008, NM_212752, NM_212794, NM_001013278, NM_201480, NM_001077535, NM_131311, NM_131193, NM_205726, NM_205566, NM_001083812, NM_001080590, NM_001089498, NM_199868, NM_001007771, NM_001003518, NM_212585, NM_130978, NM_200441, NM_001017819, NM_001045143, NM_131670, NM_131044, NM_131452, NM_199744, NM_201454, NM_131499, NM_200629, NM_173259, NM_194380, NM_001007775, NM_199658, NM_001007309, NM_001089524, NM_001077279, NM_200950, NM_001045349, NM_001044927, NM_001007440, NM_001002655, NM_212565, NM_001004597, NM_207060, NM_001002467, NM_001007366, NM_131184, NM_001002165, NM_205705, NM_001045175

Confidence: 0.7

NM_200773, NM_200639, NM_001098388, NM_201301, NM_001001409, NM_131863, NM_001005292, NM_001009908, NM_001077259, NM_001007327, NM_001083826, NM_001002214, NM_201461, NM_001007403, NM_212687, NM_199941, NM_001007285, NM_001020656, NM_131872, NM_200211, NM_001008616, NM_001044911, NM_001013562, NM_131427, NM_001035261, NM_131267, NM_205644, NM_001045447, NM_001002467, NM_131856, NM_001002471, NM_198805, NM_199992, NM_001002228, NM_205674, NM_001003781, NM_001099254, NM_152978, NM_213439, NM_130989, NM_201308, NM_001005955, NM_001020595, NM_199212, NM_131862, NM_200062, NM_001001816, NM_213104, NM_213638, NM_213478, NM_001080044, NM_131665, NM_001089352, NM_131686, NM_001039804, NM_200971, NM_213538, NM_001030164, NM_001044709, NM_200753, NM_130941, NM_212906, NM_001014354, NM_001002227, NM_214806, NM_212637, NM_199567, NM_201504, NM_131885, NM_199479, NM_131553, NM_001001818, NM_213459, NM_001025526, NM_200649, NM_001040326, NM_131520, NM_213405, NM_001009918, NM_001077765, NM_001017640, NM_001013538, NM_001045019, NM_212966, NM_194396, NM_001001398, NM_201471, NM_001077370, NM_001077391, NM_213052, NM_001100008, NM_212752, NM_212794, NM_001013278, NM_201480, NM_001077535, NM_131311, NM_001045125, NM_131193, NM_205726, NM_205566, NM_001083812, NM_001080590, NM_201035, NM_001089498, NM_199868,

NM_001007771, NM_001003518, NM_212585, NM_001004529, NM_130978, NM_200441,
NM_001017819, NM_001045143, NM_131670, NM_213395, NM_131044, NM_131452,
NM_199744, NM_213640, NM_201454, NM_131499, NM_131041, NM_213111, NM_200629,
NM_001077799, NM_001018126, NM_173259, NM_194380, NM_001007775, NM_199658,
NM_001007309, NM_001089524, NM_001025503, NM_001077279, NM_200950,
NM_001045349, NM_001044927, NM_001007440, NM_001002655, NM_001030101,
NM_212565, NM_001017882, NM_001006072, NM_001004597, NM_001030261, NM_207060,
NM_201151, NM_001007366, NM_131184, NM_001002165, NM_205705, NM_001045175,
NM_001080654, NM_001045413

Confidence: 0.6

NM_001020656, NM_212966, NM_152978, NM_001089352, NM_212687, NM_212794,
NM_001013560, NM_001025526, NM_205726, NM_194396, NM_200971, NM_001001409,
NM_001007327, NM_001044792, NM_001040326, NM_001077535, NM_131686,
NM_001039804, NM_201308, NM_001045019, NM_001099254, NM_131863, NM_200062,
NM_001077259, NM_001100008, NM_001083812, NM_213538, NM_001045413, NM_200773,
NM_001080654, NM_001045311, NM_001002227, NM_213052, NM_212637, NM_001035261,
NM_213439, NM_001001398, NM_131520, NM_131665, NM_201471, NM_001044911,
NM_199567, NM_001083826, NM_131311, NM_198805, NM_212752, NM_201504,
NM_001020764, NM_131885, NM_001020595, NM_130989, NM_131427, NM_001030164,
NM_131856, NM_213528, NM_213104, NM_001002214, NM_001008616, NM_001098388,
NM_199479, NM_213638, NM_131193, NM_212906, NM_001007403, NM_001002471,
NM_205566, NM_001017640, NM_001013538, NM_201461, NM_131872, NM_131553,
NM_001045175, NM_001002228, NM_001080590, NM_001009918, NM_205644, NM_200211,
NM_213405, NM_001001818, NM_130941, NM_001007285, NM_001017552, NM_214806,
NM_200753, NM_201480, NM_001013278, NM_001003781, NM_001077391, NM_001014354,
NM_200649, NM_001013562, NM_001044709, NM_201301, NM_001082901, NM_213459,
NM_001080044, NM_001045125, NM_001002467, NM_131862, NM_001030203,
NM_001009908, NM_001045447, NM_199941, NM_001045487, NM_205674, NM_001077370,
NM_131267, NM_001005955, NM_001005292, NM_213478, NM_001001816, NM_001077765,
NM_199992, NM_200639, NM_199212, NM_199754, NM_001089498, NM_213395,
NM_001077742, NM_213111, NM_001082873, NM_199658, NM_001006072, NM_001007216,
NM_205705, NM_200629, NM_200950, NM_001025503, NM_001007366, NM_194380,
NM_130978, NM_001005997, NM_001077799, NM_001004597, NM_199744, NM_131670,
NM_001007447, NM_001045143, NM_131499, NM_001002655, NM_001030261,
NM_001007771, NM_001077279, NM_200441, NM_213640, NM_199868, NM_001017882,
NM_200452, NM_201035, NM_212565, NM_207060, NM_001030101, NM_001017819,
NM_001004529, NM_173259, NM_001089524, NM_131041, NM_001007309, NM_001002165,
NM_131044, NM_001007775, NM_201454, NM_001044927, NM_131452, NM_201151,
NM_001007440, NM_200571, NM_131667, NM_001045349, NM_001003518, NM_001018126,
NM_212585, NM_131184

Confidence: 0.5

NM_001020656, NM_212966, NM_152978, NM_001089352, NM_212687, NM_212794,
NM_178131, NM_001013560, NM_001025526, NM_205726, NM_194396, NM_200971,
NM_001001409, NM_001007327, NM_001044792, NM_001040326, NM_001077535,
NM_131686, NM_001039804, NM_201308, NM_001045019, NM_001099254, NM_131863,
NM_200062, NM_001077259, NM_001100008, NM_001083812, NM_213538, NM_001045413,
NM_200773, NM_001080654, NM_001045311, NM_001002227, NM_213052, NM_212637,
NM_001035261, NM_213439, NM_001001398, NM_131520, NM_131665, NM_201471,
NM_001044911, NM_199567, NM_001083826, NM_131311, NM_198805, NM_212752,
NM_201504, NM_001020764, NM_131885, NM_001020595, NM_130989, NM_131427,
NM_001030164, NM_131856, NM_213528, NM_213104, NM_001002214, NM_001008616,

NM_001098388, NM_199479, NM_213638, NM_131193, NM_212906, NM_001007403, NM_001002471, NM_205566, NM_001017640, NM_001013538, NM_201461, NM_131872, NM_131553, NM_001045175, NM_001002228, NM_001080590, NM_001009918, NM_205644, NM_200211, NM_213405, NM_001001818, NM_198910, NM_130941, NM_001007285, NM_001017552, NM_214806, NM_200753, NM_201480, NM_001013278, NM_001003781, NM_001077391, NM_001014354, NM_200649, NM_001013562, NM_001044709, NM_201301, NM_001082901, NM_213459, NM_001080044, NM_001045125, NM_001002467, NM_131862, NM_001030203, NM_001009908, NM_001045447, NM_199941, NM_001045487, NM_205674, NM_001077370, NM_131267, NM_001005955, NM_001005292, NM_213478, NM_001001816, NM_001077765, NM_199992, NM_200639, NM_199212, NM_199754, NM_001089498, NM_213395, NM_001077742, NM_213111, NM_001082873, NM_199658, NM_001006072, NM_001007216, NM_205705, NM_200629, NM_200950, NM_001025503, NM_001007366, NM_194380, NM_130978, NM_001005997, NM_001077799, NM_001004597, NM_199744, NM_131670, NM_001007447, NM_001045143, NM_131499, NM_001002655, NM_001030261, NM_001007771, NM_001077279, NM_200441, NM_213640, NM_199868, NM_001017882, NM_200452, NM_201035, NM_212565, NM_207060, NM_001030101, NM_001017819, NM_001004529, NM_173259, NM_001089524, NM_131041, NM_001007309, NM_001002165, NM_131044, NM_001007775, NM_201454, NM_001044927, NM_131452, NM_201151, NM_001007440, NM_200571, NM_131667, NM_001045349, NM_001003518, NM_001018126, NM_212585, NM_131184

Confidence: 0.4

NM_001013562, NM_001001816, NM_001030164, NM_001002227, NM_001080654, NM_214806, NM_001007403, NM_001001398, NM_001001409, NM_200062, NM_205566, NM_199992, NM_001014354, NM_212637, NM_001002471, NM_131311, NM_001009908, NM_199479, NM_001077370, NM_198910, NM_001100008, NM_200211, NM_001045175, NM_001077259, NM_201301, NM_001025526, NM_131665, NM_201471, NM_001082901, NM_001005955, NM_130989, NM_178131, NM_001005292, NM_001044911, NM_131863, NM_131553, NM_213459, NM_131427, NM_001045413, NM_001002228, NM_001040326, NM_212752, NM_001013560, NM_201308, NM_001077391, NM_213439, NM_001007327, NM_205644, NM_201480, NM_198805, NM_200649, NM_131872, NM_212687, NM_131686, NM_213528, NM_131267, NM_001035261, NM_001013538, NM_199941, NM_001080044, NM_199212, NM_001017640, NM_001002467, NM_001083826, NM_001077535, NM_001020764, NM_001020595, NM_001044792, NM_001009918, NM_001001818, NM_001077765, NM_001002214, NM_001044709, NM_001089352, NM_001007285, NM_212966, NM_194396, NM_213052, NM_213405, NM_131856, NM_131193, NM_213638, NM_001017552, NM_001003781, NM_200773, NM_001080590, NM_001098388, NM_001030203, NM_205674, NM_001013278, NM_001045487, NM_201461, NM_001008616, NM_212794, NM_201504, NM_001045019, NM_152978, NM_131885, NM_200971, NM_001083812, NM_200753, NM_001045311, NM_001020656, NM_001045125, NM_199567, NM_213104, NM_213478, NM_213538, NM_001039804, NM_130941, NM_001099254, NM_205726, NM_001045447, NM_200639, NM_131862, NM_212906, NM_131520, NM_001045143, NM_131044, NM_001089498, NM_001077799, NM_212585, NM_207060, NM_131041, NM_001007366, NM_001082873, NM_200452, NM_001006072, NM_001030101, NM_001007440, NM_212565, NM_213395, NM_001025503, NM_131670, NM_131452, NM_131499, NM_001007309, NM_001004529, NM_199754, NM_001002655, NM_001007447, NM_200441, NM_001007771, NM_201454, NM_201035, NM_001089524, NM_173259, NM_001044927, NM_001017819, NM_001017882, NM_194380, NM_213111, NM_001002165, NM_001045349, NM_001005997, NM_200571, NM_001077742, NM_200629, NM_130978, NM_001007775, NM_199658, NM_200950, NM_131184, NM_001018126, NM_001030261, NM_205705, NM_213640, NM_199744, NM_199868, NM_001003518, NM_001004597, NM_201151, NM_001077279, NM_131667, NM_001007216

Confidence: 0.3

NM_001013562, NM_001001816, NM_001030164, NM_001002227, NM_001080654, NM_214806, NM_001007403, NM_001001398, NM_001001409, NM_200062, NM_205566, NM_199992, NM_001014354, NM_212637, NM_001002471, NM_131311, NM_001009908, NM_199479, NM_001077370, NM_198910, NM_001100008, NM_200211, NM_001045175, NM_001077259, NM_201301, NM_001025526, NM_131665, NM_201471, NM_001082901, NM_001005955, NM_130989, NM_178131, NM_001005292, NM_001044911, NM_131863, NM_131553, NM_213459, NM_131427, NM_001045413, NM_001002228, NM_001040326, NM_212752, NM_001013560, NM_201308, NM_001077391, NM_213439, NM_001007327, NM_205644, NM_201480, NM_198805, NM_200649, NM_131872, NM_212687, NM_131686, NM_213528, NM_131267, NM_001035261, NM_001013538, NM_199941, NM_001080044, NM_199212, NM_001017640, NM_001002467, NM_001083826, NM_001077535, NM_001020764, NM_001020595, NM_001044792, NM_001009918, NM_001001818, NM_001077765, NM_001002214, NM_001044709, NM_001089352, NM_001007285, NM_212966, NM_194396, NM_213052, NM_213405, NM_131856, NM_131193, NM_213638, NM_001017552, NM_001003781, NM_200773, NM_001080590, NM_001098388, NM_001030203, NM_205674, NM_001013278, NM_001045487, NM_201461, NM_001008616, NM_212794, NM_201504, NM_001045019, NM_152978, NM_131885, NM_200971, NM_001083812, NM_200753, NM_001045311, NM_001020656, NM_001045125, NM_199567, NM_213104, NM_213478, NM_213538, NM_001039804, NM_130941, NM_001099254, NM_205726, NM_001045447, NM_200639, NM_131862, NM_212906, NM_131520, NM_001045143, NM_131044, NM_001089498, NM_001077799, NM_212585, NM_207060, NM_131041, NM_001007366, NM_001082873, NM_200452, NM_001006072, NM_001030101, NM_001007440, NM_212565, NM_213395, NM_001025503, NM_131670, NM_131452, NM_131499, NM_001007309, NM_001004529, NM_199754, NM_001002655, NM_001007447, NM_200441, NM_001007771, NM_201454, NM_201035, NM_001089524, NM_173259, NM_001044927, NM_001017819, NM_001017882, NM_194380, NM_213111, NM_001002165, NM_001045349, NM_001005997, NM_200571, NM_001077742, NM_200629, NM_130978, NM_001007775, NM_199658, NM_200950, NM_131184, NM_001018126, NM_001030261, NM_205705, NM_213640, NM_199744, NM_199868, NM_001003518, NM_001004597, NM_201151, NM_001077279, NM_131667, NM_001007216

Confidence: 0.2

NM_001008616, NM_201480, NM_001045413, NM_200062, NM_131665, NM_212906, NM_199567, NM_001083826, NM_131267, NM_001013278, NM_213104, NM_001045487, NM_001077370, NM_001007403, NM_131885, NM_213478, NM_001098388, NM_131520, NM_001044709, NM_001002214, NM_001099254, NM_199992, NM_205674, NM_194396, NM_131553, NM_213405, NM_131862, NM_001083812, NM_001017640, NM_001013538, NM_201301, NM_152978, NM_199479, NM_200753, NM_214806, NM_212966, NM_001045447, NM_001002467, NM_199212, NM_001003781, NM_201308, NM_201504, NM_001030203, NM_130941, NM_131863, NM_001007285, NM_001045311, NM_001025526, NM_213528, NM_001030164, NM_131872, NM_001080590, NM_001017552, NM_001080044, NM_131311, NM_213439, NM_130989, NM_213052, NM_001001409, NM_001001816, NM_200639, NM_001005955, NM_200211, NM_001100008, NM_001002471, NM_205644, NM_001080654, NM_001013560, NM_001082901, NM_001005292, NM_001045125, NM_001045175, NM_131686, NM_213538, NM_198910, NM_131856, NM_001077391, NM_200773, NM_001020656, NM_001089352, NM_200649, NM_001045019, NM_001009908, NM_001077535, NM_001044911, NM_131193, NM_001040326, NM_201461, NM_212752, NM_001077259, NM_205726, NM_001001818, NM_001001398, NM_001007327, NM_001002227, NM_212637, NM_213459, NM_001044792, NM_001039804, NM_212687, NM_001020764, NM_198805, NM_001013562, NM_131427, NM_001009918, NM_212794, NM_001035261, NM_213638, NM_205566, NM_001014354, NM_001077765, NM_178131, NM_201471, NM_001002228, NM_199941, NM_200971, NM_001020595, NM_200950,

NM_131670, NM_001005997, NM_001045143, NM_001002165, NM_201035, NM_001017819, NM_131044, NM_001030101, NM_001018126, NM_001089498, NM_201151, NM_001007216, NM_131499, NM_001007771, NM_131184, NM_200571, NM_213395, NM_001044927, NM_131452, NM_200441, NM_213111, NM_212565, NM_001082873, NM_199744, NM_001017882, NM_213640, NM_001089524, NM_001002655, NM_001077742, NM_207060, NM_001007440, NM_001006072, NM_001007366, NM_173259, NM_199754, NM_001077279, NM_194380, NM_001077799, NM_001007447, NM_201454, NM_131041, NM_130978, NM_001030261, NM_001045349, NM_200452, NM_001004529, NM_199868, NM_001003518, NM_212585, NM_205705, NM_001007309, NM_001004597, NM_200629, NM_001007775, NM_199658, NM_001025503, NM_131667

Confidence: 0.1

NM_001008616, NM_201480, NM_001045413, NM_200062, NM_131665, NM_212906, NM_199567, NM_001083826, NM_131267, NM_001013278, NM_213104, NM_001045487, NM_001077370, NM_001007403, NM_131885, NM_213478, NM_001098388, NM_131520, NM_001044709, NM_001002214, NM_001099254, NM_199992, NM_205674, NM_194396, NM_131553, NM_213405, NM_131862, NM_001083812, NM_001017640, NM_001013538, NM_201301, NM_152978, NM_199479, NM_200753, NM_214806, NM_212966, NM_001045447, NM_001002467, NM_199212, NM_001003781, NM_201308, NM_201504, NM_001030203, NM_130941, NM_131863, NM_001007285, NM_001045311, NM_001025526, NM_213528, NM_001030164, NM_131872, NM_001080590, NM_001017552, NM_001080044, NM_131311, NM_213439, NM_130989, NM_213052, NM_001001409, NM_001001816, NM_200639, NM_001005955, NM_200211, NM_001100008, NM_001002471, NM_205644, NM_001080654, NM_001013560, NM_001082901, NM_001005292, NM_001045125, NM_001045175, NM_131686, NM_213538, NM_198910, NM_131856, NM_001077391, NM_200773, NM_001020656, NM_001089352, NM_200649, NM_001045019, NM_001009908, NM_001077535, NM_001044911, NM_131193, NM_001040326, NM_201461, NM_212752, NM_001077259, NM_205726, NM_001001818, NM_001001398, NM_001007327, NM_001002227, NM_212637, NM_213459, NM_001044792, NM_001039804, NM_212687, NM_001020764, NM_198805, NM_001013562, NM_131427, NM_001009918, NM_212794, NM_001035261, NM_213638, NM_205566, NM_001014354, NM_001077765, NM_178131, NM_201471, NM_001002228, NM_199941, NM_200971, NM_001020595, NM_200950, NM_131670, NM_001005997, NM_001045143, NM_001002165, NM_201035, NM_001017819, NM_131044, NM_001030101, NM_001018126, NM_001089498, NM_201151, NM_001007216, NM_131499, NM_001007771, NM_131184, NM_200571, NM_213395, NM_001044927, NM_131452, NM_200441, NM_213111, NM_212565, NM_001082873, NM_199744, NM_001017882, NM_213640, NM_001089524, NM_001002655, NM_001077742, NM_207060, NM_001007440, NM_001006072, NM_001007366, NM_173259, NM_199754, NM_001077279, NM_194380, NM_001077799, NM_001007447, NM_201454, NM_131041, NM_130978, NM_001030261, NM_001045349, NM_200452, NM_001004529, NM_199868, NM_001003518, NM_212585, NM_205705, NM_001007309, NM_001004597, NM_200629, NM_001007775, NM_199658, NM_001025503, NM_131667

Confidence: 0.0

NM_201189, NM_214806, NM_201305, NM_001001398, NM_205726, NM_213312, NM_199668, NM_199731, NM_001008574, NM_001013562, NM_183410, NM_001007285, NM_001008627, NM_131193, NM_131427, NM_212562, NM_201461, NM_200971, NM_200773, NM_001020656, NM_001045019, NM_001004560, NM_213528, NM_200312, NM_001035261, NM_199766, NM_200201, NM_001025526, NM_001005292, NM_001007168, NM_130989, NM_130941, NM_001077742, NM_001077259, NM_001045175, NM_212824, NM_199992, NM_200639, NM_001025460, NM_213136, NM_001013560, NM_001004607, NM_131799, NM_131862, NM_001008601, NM_001007447, NM_001002227, NM_131553, NM_173244, NM_178131, NM_001077391, NM_001077579, NM_001098176, NM_201198,

NM_212637, NM_001079955, NM_001045169, NM_001045413, NM_213439, NM_001017552, NM_199479, NM_001004635, NM_213304, NM_199740, NM_198871, NM_001004618, NM_194416, NM_001030203, NM_001003638, NM_001009908, NM_001002144, NM_131856, NM_001002214, NM_001099254, NM_001083826, NM_212752, NM_001040175, NM_001037580, NM_213192, NM_001020595, NM_201120, NM_001033099, NM_205565, NM_201301, NM_001020554, NM_201308, NM_200613, NM_001017901, NM_001005955, NM_001002669, NM_001005931, NM_152978, NM_131686, NM_001089494, NM_212891, NM_131621, NM_131809, NM_212874, NM_001080614, NM_001040326, NM_200088, NM_213478, NM_001017796, NM_200332, NM_200805, NM_001003781, NM_170763, NM_213104, NM_001003619, NM_001080082, NM_212687, NM_001080642, NM_001045487, NM_001044792, NM_205674, NM_201504, NM_001045311, NM_194396, NM_001045405, NM_001030072, NM_200326, NM_001013278, NM_199715, NM_198805, NM_131112, NM_001089528, NM_212966, NM_001077370, NM_212563, NM_001045182, NM_200190, NM_001082901, NM_001044967, NM_001045235, NM_200062, NM_213459, NM_214707, NM_205644, NM_001004561, NM_001004568, NM_199941, NM_001030112, NM_001001818, NM_199212, NM_001013533, NM_131140, NM_178437, NM_001100008, NM_001080640, NM_001098388, NM_001077767, NM_001080606, NM_212825, NM_213422, NM_001030164, NM_213405, NM_001001409, NM_001002467, NM_131863, NM_131373, NM_131665, NM_001008609, NM_001002228, NM_001089369, NM_001098264, NM_212725, NM_001045250, NM_212906, NM_001045327, NM_213638, NM_199876, NM_001017640, NM_001044709, NM_199567, NM_001020701, NM_001014354, NM_001001816, NM_001002471, NM_001002075, NM_001013538, NM_212794, NM_001083827, NM_001077765, NM_001080044, NM_201471, NM_001044778, NM_205566, NM_213538, NM_001044911, NM_200211, NM_213111, NM_001005997, NM_001008595, NM_001003556, NM_001014300, NM_001003515, NM_131885, NM_153643, NM_001007359, NM_131260, NM_131267, NM_214691, NM_200753, NM_001020764, NM_200649, NM_001004296, NM_200159, NM_213052, NM_001020525, NM_001003765, NM_001025301, NM_183338, NM_131872, NM_001018131, NM_131855, NM_001080590, NM_001002102, NM_001045447, NM_213640, NM_181765, NM_001009918, NM_198910, NM_130997, NM_001007316, NM_001007403, NM_131311, NM_001080654, NM_201480, NM_001083812, NM_001077535, NM_001037375, NM_201154, NM_200080, NM_200577, NM_001045434, NM_001017882, NM_001045125, NM_001037428, NM_001017771, NM_001039804, NM_213506, NM_001004014, NM_001008616, NM_001002725, NM_131561, NM_131276, NM_131457, NM_001007327, NM_001089352, NM_131520, NM_131219, NM_001045349, NM_200780, NM_213395, NM_199599, NM_001007309, NM_200705, NM_131667, NM_131532, NM_001002192, NM_214695, NM_213493, NM_001003460, NM_201025, NM_200441, NM_200629, NM_001082873, NM_001099445, NM_130966, NM_001080012, NM_212772, NM_212779, NM_131509, NM_001044927, NM_200452, NM_001012312, NM_173283, NM_199754, NM_130953, NM_212585, NM_001004597, NM_001076612, NM_201175, NM_201151, NM_001002407, NM_001004515, NM_001003646, NM_173277, NM_001003518, NM_001089498, NM_131891, NM_001083817, NM_201454, NM_001002143, NM_200877, NM_001006074, NM_205549, NM_001017607, NM_001013515, NM_001080750, NM_001082848, NM_001040358, NM_001020713, NM_001004648, NM_001003557, NM_001003533, NM_207060, NM_001082893, NM_131184, NM_131452, NM_131744, NM_001077555, NM_131348, NM_001020765, NM_001002655, NM_001002165, NM_001030261, NM_001006072, NM_001007216, NM_199868, NM_001007775, NM_199983, NM_199744, NM_001089540, NM_001077799, NM_001034976, NM_001080013, NM_001045143, NM_001007366, NM_205562, NM_213353, NM_001005580, NM_001004529, NM_194371, NM_001005942, NM_183340, NM_001077279, NM_130978, NM_131159, NM_131041, NM_001044862, NM_200884, NM_001007440, NM_001017819, NM_001007406, NM_001030101, NM_207640, NM_198984, NM_131670, NM_001007055, NM_201035, NM_001025503, NM_205637, NM_205707, NM_199625, NM_212963, NM_001002686, NM_001007771, NM_200177, NM_001018126, NM_213362, NM_194380, NM_173259,

NM_205607, NM_001103124, NM_173218, NM_001080168, NM_001077730, NM_212578, NM_001020585, NM_001044830, NM_200671, NM_001024388, NM_001002306, NM_001007328, NM_001013350, NM_205705, NM_198375, NM_001089356, NM_131044, NM_131604, NM_001002392, NM_212565, NM_001002754, NM_200571, NM_200950, NM_199699, NM_200023, NM_199658, NM_131499, NM_001089524, NM_001040250

miR-133 targets (in alignments of 7 vertebrate genomes)

Confidence: 0.9

NM_001001950, NM_199853, NM_213122, NM_001100086, NM_131037, NM_001098730, NM_001002667, NM_213293, NM_199515, NM_131463, NM_001017886, NM_199806, NM_200911, NM_001015041, NM_001030164, NM_001001940, NM_131193, NM_130941, NM_001002527, NM_199715, NM_201285, NM_001083551, NM_001079951, NM_214715, NM_201466, NM_001080047, NM_199567, NM_131893, NM_131896, NM_001030238, NM_131180, NM_001012373, NM_131452

Confidence: 0.8

NM_131595, NM_001002527, NM_199715, NM_001014369, NM_001006079, NM_201026, NM_001034976, NM_131193, NM_001017886, NM_199515, NM_001030164, NM_199986, NM_213293, NM_001015041, NM_199213, NM_001076569, NM_199853, NM_131452, NM_001045170, NM_001030238, NM_131037, NM_001001950, NM_131180, NM_131361, NM_200911, NM_001002667, NM_001012373, NM_200626, NM_131463, NM_199806, NM_001100086, NM_001098730, NM_200391, NM_199655, NM_130941, NM_200080, NM_213122, NM_001001940, NM_199567, NM_205669, NM_194273, NM_181495, NM_131729, NM_001001402, NM_131893, NM_199538, NM_201285, NM_201466, NM_182967, NM_212950, NM_173247, NM_199532, NM_200874, NM_131686, NM_001003570, NM_001079951, NM_001080047, NM_199219, NM_001083551, NM_214715, NM_194384, NM_131896, NM_213045, NM_130949

Confidence: 0.7

NM_131595, NM_001002527, NM_199715, NM_001014369, NM_001006079, NM_201026, NM_001034976, NM_131193, NM_001017886, NM_199687, NM_199515, NM_199923, NM_001030164, NM_199986, NM_200929, NM_213293, NM_001015041, NM_199213, NM_001001944, NM_001076569, NM_199853, NM_131452, NM_001045170, NM_001030238, NM_131037, NM_001001950, NM_001020751, NM_131180, NM_131361, NM_200911, NM_001002667, NM_001012373, NM_200626, NM_131463, NM_199806, NM_130949, NM_001100086, NM_001098730, NM_200391, NM_199655, NM_130941, NM_200080, NM_213122, NM_001001940, NM_199567, NM_205669, NM_194273, NM_181495, NM_131729, NM_001001402, NM_131893, NM_199538, NM_201285, NM_201466, NM_212802, NM_182967, NM_212950, NM_173247, NM_199532, NM_200874, NM_131686, NM_001003570, NM_001079951, NM_001080047, NM_199219, NM_001083551, NM_214715, NM_194384, NM_213045, NM_131896

Confidence: 0.6

NM_001076569, NM_200391, NM_001014369, NM_131452, NM_200080, NM_199853, NM_199923, NM_131037, NM_131463, NM_200929, NM_131361, NM_199687, NM_001002667, NM_201026, NM_199655, NM_001082551, NM_001030164, NM_001017886, NM_213293, NM_001001950, NM_200626, NM_001044793, NM_001100086, NM_194273, NM_213122, NM_199806, NM_131595, NM_001020751, NM_201501, NM_199567, NM_199213, NM_130949, NM_001012373, NM_199715, NM_001001940, NM_131193, NM_001030238, NM_200911, NM_199986, NM_130941, NM_131180, NM_001015041,

NM_001098730, NM_001001944, NM_001034976, NM_001002527, NM_205669, NM_199515, NM_001006079, NM_001045170, NM_199532, NM_001080047, NM_199538, NM_199219, NM_001079951, NM_131893, NM_131896, NM_213045, NM_001083551, NM_001003570, NM_182967, NM_194384, NM_214715, NM_212802, NM_200874, NM_199662, NM_201285, NM_131729, NM_131686, NM_181495, NM_212950, NM_001001402, NM_201466, NM_173247

Confidence: 0.5

NM_001076569, NM_200391, NM_001014369, NM_131452, NM_200080, NM_199853, NM_199923, NM_131037, NM_131463, NM_200929, NM_131361, NM_199687, NM_001002667, NM_201026, NM_199655, NM_001082551, NM_001030164, NM_001077144, NM_001017886, NM_213293, NM_001001950, NM_200626, NM_001044793, NM_001100086, NM_194273, NM_213122, NM_199806, NM_131595, NM_001020751, NM_201501, NM_199567, NM_199213, NM_130949, NM_001012373, NM_199715, NM_001001940, NM_131193, NM_213045, NM_001030238, NM_200911, NM_199986, NM_130941, NM_131180, NM_001015041, NM_001098730, NM_001001944, NM_001034976, NM_001002527, NM_205669, NM_199515, NM_001006079, NM_001045170, NM_199532, NM_001080047, NM_199538, NM_199219, NM_001079951, NM_131893, NM_001098180, NM_131896, NM_001083551, NM_199881, NM_001003570, NM_182967, NM_194384, NM_214715, NM_212802, NM_200874, NM_199662, NM_201285, NM_131729, NM_131686, NM_213146, NM_181495, NM_212950, NM_001001402, NM_201466, NM_173247

Confidence: 0.4

NM_001030238, NM_213122, NM_213045, NM_001034976, NM_131180, NM_199806, NM_001044793, NM_200080, NM_131037, NM_130949, NM_131361, NM_130931, NM_001030164, NM_001001940, NM_200626, NM_213293, NM_001014369, NM_001006079, NM_194384, NM_199655, NM_199715, NM_001082551, NM_199687, NM_200391, NM_001100086, NM_001002667, NM_199853, NM_001001944, NM_131595, NM_131193, NM_001045170, NM_001077144, NM_199213, NM_001098730, NM_201501, NM_205669, NM_199986, NM_131463, NM_001012373, NM_199567, NM_130941, NM_001001950, NM_001015041, NM_199515, NM_001076569, NM_001002527, NM_200929, NM_194273, NM_001017886, NM_200911, NM_001100948, NM_131452, NM_001017573, NM_201026, NM_199219, NM_001003570, NM_199538, NM_001080047, NM_212802, NM_200874, NM_199532, NM_001079951, NM_181495, NM_199662, NM_173247, NM_182967, NM_201285, NM_001083551, NM_001001402, NM_201466, NM_001098180, NM_213146, NM_214715, NM_212950, NM_131686, NM_131729, NM_199881, NM_131896, NM_131893

Confidence: 0.3

NM_001030238, NM_199923, NM_213122, NM_213045, NM_001034976, NM_131180, NM_199806, NM_001044793, NM_200080, NM_131037, NM_130949, NM_131361, NM_130931, NM_001030164, NM_001001940, NM_200626, NM_213293, NM_001014369, NM_001006079, NM_001020751, NM_194384, NM_199655, NM_199715, NM_001082551, NM_199687, NM_200391, NM_001100086, NM_001002667, NM_199853, NM_001001944, NM_131595, NM_131193, NM_001045170, NM_001077144, NM_199213, NM_001098730, NM_201501, NM_205669, NM_199986, NM_131463, NM_001012373, NM_199567, NM_130941, NM_001001950, NM_001015041, NM_199515, NM_001076569, NM_001002527, NM_200929, NM_194273, NM_001017886, NM_200911, NM_001100948, NM_131452, NM_001017573, NM_201026, NM_199219, NM_001003570, NM_199538, NM_001080047, NM_212802, NM_200874, NM_199532, NM_001079951, NM_181495, NM_199662, NM_173247, NM_182967, NM_201285, NM_001083551, NM_001001402, NM_201466, NM_001098180, NM_213146, NM_214715, NM_212950, NM_131686, NM_131729, NM_199881, NM_131896, NM_131893

Confidence: 0.2

NM_200929, NM_001030238, NM_001001940, NM_131595, NM_001002527, NM_130941, NM_199715, NM_001100086, NM_199213, NM_131361, NM_200391, NM_201026, NM_001002667, NM_001017886, NM_001014369, NM_001001950, NM_001012373, NM_001044793, NM_199986, NM_130949, NM_199806, NM_194384, NM_001045170, NM_001098730, NM_131452, NM_131193, NM_213045, NM_199515, NM_001020751, NM_205669, NM_200911, NM_199687, NM_001100948, NM_001015041, NM_200626, NM_131037, NM_001082551, NM_199655, NM_001017573, NM_201501, NM_199923, NM_001076569, NM_001001944, NM_001030164, NM_194273, NM_001077144, NM_131180, NM_199567, NM_213293, NM_131463, NM_001006079, NM_200080, NM_001034976, NM_130931, NM_213122, NM_199853, NM_001098180, NM_131896, NM_173247, NM_001083551, NM_001080047, NM_199881, NM_201466, NM_199662, NM_199538, NM_131686, NM_199532, NM_182967, NM_181495, NM_001003570, NM_001079951, NM_001001402, NM_131893, NM_214715, NM_212802, NM_212950, NM_200874, NM_201285, NM_131729, NM_213146, NM_199219

Confidence: 0.1

NM_200929, NM_001030238, NM_001001940, NM_131595, NM_001002527, NM_130941, NM_199715, NM_001100086, NM_199213, NM_131361, NM_200391, NM_201026, NM_001002667, NM_001017886, NM_001014369, NM_001001950, NM_001012373, NM_001044793, NM_199986, NM_130949, NM_199806, NM_194384, NM_001045170, NM_001098730, NM_131452, NM_131193, NM_213045, NM_199515, NM_001020751, NM_205669, NM_200911, NM_199687, NM_001100948, NM_001015041, NM_200626, NM_131037, NM_001082551, NM_199655, NM_001017573, NM_201501, NM_199923, NM_001076569, NM_001001944, NM_001030164, NM_194273, NM_001077144, NM_131180, NM_199567, NM_213293, NM_131463, NM_001006079, NM_200080, NM_001034976, NM_130931, NM_213122, NM_199853, NM_001098180, NM_131896, NM_173247, NM_001083551, NM_001080047, NM_199881, NM_201466, NM_199662, NM_199538, NM_131686, NM_199532, NM_182967, NM_181495, NM_001003570, NM_001079951, NM_001001402, NM_131893, NM_214715, NM_212802, NM_212950, NM_200874, NM_201285, NM_131729, NM_213146, NM_199219

Confidence: 0.0

NM_001080644, NM_001077549, NM_001076569, NM_131628, NM_001076615, NM_001040685, NM_131604, NM_001003596, NM_001030238, NM_001045847, NM_001075104, NM_001002155, NM_001001950, NM_001002628, NM_001100436, NM_152965, NM_212861, NM_001045472, NM_001045076, NM_212733, NM_001003455, NM_001039171, NM_001017886, NM_001002451, NM_200367, NM_001007053, NM_001001944, NM_213045, NM_200816, NM_001001833, NM_200302, NM_213004, NM_199715, NM_001077144, NM_198805, NM_130931, NM_001020716, NM_001014369, NM_001002667, NM_213184, NM_200757, NM_001018165, NM_001045203, NM_200441, NM_001100948, NM_001004553, NM_213505, NM_001080052, NM_001080636, NM_001082831, NM_130949, NM_131304, NM_201584, NM_201473, NM_001045161, NM_001014332, NM_001002497, NM_200633, NM_001002439, NM_173283, NM_199515, NM_131595, NM_001080606, NM_001030164, NM_001045172, NM_213293, NM_213474, NM_001039834, NM_214816, NM_001002624, NM_001002718, NM_199584, NM_001100439, NM_001001825, NM_199567, NM_001017813, NM_001017709, NM_001098730, NM_131874, NM_001076757, NM_130940, NM_214687, NM_001008584, NM_201058, NM_001002541, NM_199991, NM_001017573, NM_001002729, NM_001001940, NM_001001947, NM_200614, NM_213403, NM_198067, NM_131260, NM_001079704, NM_212583, NM_214691, NM_001045170, NM_001045177, NM_001045351, NM_200391, NM_001029957, NM_001002173, NM_001002354, NM_001008624, NM_178297, NM_200229, NM_213122, NM_001017724, NM_200205, NM_178437, NM_131872, NM_131452, NM_001020472, NM_131435, NM_130928, NM_201295, NM_201090, NM_001045164, NM_201143,

NM_001007293, NM_001100086, NM_213640, NM_001002348, NM_200810, NM_199687, NM_199861, NM_001083557, NM_001017607, NM_173221, NM_001044793, NM_001080001, NM_131463, NM_001020751, NM_001020717, NM_201067, NM_200080, NM_201043, NM_201335, NM_001012386, NM_001002154, NM_201026, NM_001039924, NM_205669, NM_194384, NM_194273, NM_199814, NM_001098260, NM_199213, NM_001089583, NM_001044985, NM_001081748, NM_001020477, NM_001076719, NM_131037, NM_001044927, NM_001030265, NM_001045092, NM_001005982, NM_201189, NM_001003833, NM_001012373, NM_001002148, NM_001015041, NM_001002527, NM_001006079, NM_001002305, NM_213003, NM_001082551, NM_131193, NM_001089466, NM_131159, NM_131823, NM_001014361, NM_201461, NM_001002596, NM_200971, NM_001003629, NM_200353, NM_207640, NM_213417, NM_199853, NM_199655, NM_213306, NM_199749, NM_199923, NM_198366, NM_001080635, NM_153650, NM_001077154, NM_131180, NM_131361, NM_130941, NM_131018, NM_001024389, NM_001034976, NM_001014355, NM_001025526, NM_201059, NM_201501, NM_199777, NM_207050, NM_199538, NM_001098387, NM_153661, NM_199806, NM_001020643, NM_130935, NM_001040354, NM_201150, NM_001014308, NM_001007061, NM_200911, NM_199986, NM_200626, NM_213234, NM_199566, NM_001007312, NM_001007406, NM_131856, NM_001077806, NM_212880, NM_212950, NM_200386, NM_001004672, NM_001002342, NM_001004561, NM_001008612, NM_001037118, NM_200929, NM_199570, NM_213228, NM_001045447, NM_001002735, NM_212802, NM_181495, NM_212562, NM_182865, NM_201007, NM_001080047, NM_213125, NM_199614, NM_131298, NM_199881, NM_198806, NM_200417, NM_001077557, NM_001005967, NM_131594, NM_201285, NM_201466, NM_001079944, NM_001045846, NM_131494, NM_131325, NM_182968, NM_214715, NM_205565, NM_205705, NM_001040321, NM_001040304, NM_131686, NM_001007105, NM_001083551, NM_001007338, NM_200874, NM_200256, NM_199662, NM_200017, NM_001082824, NM_131893, NM_199219, NM_131362, NM_001003570, NM_200278, NM_200814, NM_001079951, NM_199532, NM_001045148, NM_001098180, NM_213437, NM_001007428, NM_131729, NM_001001402, NM_001077778, NM_173247, NM_001017647, NM_213146, NM_131896, NM_131348, NM_212932, NM_182967, NM_001007051, NM_001003741

miR-206 targets (in alignments of 7 vertebrate genomes)

Confidence: 0.9

NM_199562, NM_201295, NM_201466, NM_152974, NM_001007159, NM_001076652, NM_001003839, NM_131302, NM_199697, NM_001080044, NM_131336, NM_200104, NM_200082, NM_001102672, NM_212857, NM_213019, NM_199679, NM_131430, NM_212603, NM_131340, NM_198978, NM_214736, NM_131025, NM_001002668, NM_131220, NM_199212, NM_199675, NM_001045105, NM_201186, NM_199996, NM_131626, NM_214803, NM_181601, NM_001003738, NM_001003470, NM_213463, NM_001077391, NM_001098730, NM_194374, NM_213351, NM_001020702, NM_178303, NM_001081629, NM_001040394, NM_001001815, NM_131031, NM_213144, NM_001077804, NM_001002181, NM_131714, NM_194376, NM_001089409, NM_001033595, NM_131563, NM_212933, NM_001001592, NM_200927, NM_131595, NM_198210, NM_212991, NM_199649

Confidence: 0.8

NM_001081629, NM_131302, NM_152974, NM_201295, NM_001040394, NM_001002389, NM_001003839, NM_201466, NM_213093, NM_001002181, NM_001102672, NM_131714, NM_131336, NM_199212, NM_001080044, NM_199562, NM_001020702, NM_001007159, NM_001076652, NM_199697, NM_178303, NM_194374, NM_001077391, NM_001001815, NM_001077804, NM_213144, NM_181439, NM_131037, NM_212857, NM_131626,

NM_213019, NM_199779, NM_131340, NM_199611, NM_131025, NM_001045105, NM_194376, NM_200104, NM_201186, NM_199679, NM_001003738, NM_178302, NM_201322, NM_131430, NM_001098730, NM_214683, NM_200185, NM_212603, NM_131031, NM_212717, NM_001003470, NM_199996, NM_213463, NM_214803, NM_198978, NM_214736, NM_200082, NM_212874, NM_213351, NM_001089420, NM_001002668, NM_199675, NM_181601, NM_131220, NM_001037422, NM_001089409, NM_131736, NM_001014348, NM_213453, NM_200096, NM_001005582, NM_213223, NM_001080583, NM_131116, NM_001080029, NM_201336, NM_001080033, NM_001001818, NM_201101, NM_213552, NM_199649, NM_131563, NM_131433, NM_213158, NM_001076646, NM_001001592, NM_001007767, NM_198210, NM_001033595, NM_001077767, NM_001089428, NM_212758, NM_001044855, NM_001100001, NM_212880, NM_213185, NM_131595, NM_001045472, NM_200927, NM_199833, NM_212991, NM_212933, NM_213641, NM_213402, NM_001077253

Confidence: 0.7

NM_001081629, NM_131302, NM_152974, NM_201295, NM_001040394, NM_001002389, NM_213172, NM_001003839, NM_201466, NM_213093, NM_001002181, NM_001102672, NM_131714, NM_131336, NM_199212, NM_001080044, NM_200139, NM_199562, NM_001020702, NM_001007159, NM_001076652, NM_199697, NM_178303, NM_194374, NM_001076557, NM_001077391, NM_001001815, NM_001077804, NM_213144, NM_181439, NM_131037, NM_212857, NM_131626, NM_213019, NM_199779, NM_131340, NM_199611, NM_131025, NM_001017819, NM_001045105, NM_130981, NM_194376, NM_200104, NM_201186, NM_199679, NM_001003738, NM_178302, NM_201322, NM_205601, NM_131430, NM_001098730, NM_001003587, NM_214683, NM_200185, NM_212603, NM_131031, NM_131435, NM_212893, NM_212717, NM_001025455, NM_001003470, NM_199996, NM_213463, NM_001015068, NM_001045158, NM_214803, NM_198978, NM_214736, NM_200082, NM_212874, NM_213351, NM_001089420, NM_001002668, NM_201094, NM_199675, NM_001007281, NM_181601, NM_131220, NM_001037422, NM_001017724, NM_001089409, NM_131736, NM_001014348, NM_213453, NM_200096, NM_001005582, NM_213223, NM_001080583, NM_212919, NM_131116, NM_001017580, NM_001080029, NM_201336, NM_001080033, NM_001001818, NM_201101, NM_213552, NM_199649, NM_131563, NM_131433, NM_213158, NM_001076646, NM_001001592, NM_001007767, NM_198210, NM_001033595, NM_001077767, NM_001089428, NM_212758, NM_001044855, NM_001100001, NM_212880, NM_200278, NM_213185, NM_131595, NM_213375, NM_001045472, NM_200927, NM_199833, NM_212991, NM_212933, NM_213641, NM_213402, NM_001077253

Confidence: 0.6

NM_200139, NM_199562, NM_213093, NM_001020702, NM_201295, NM_152974, NM_001002181, NM_001007159, NM_001102672, NM_001081629, NM_199697, NM_131302, NM_001002389, NM_199212, NM_001080044, NM_213172, NM_001040394, NM_201466, NM_001003839, NM_131714, NM_001076652, NM_131336, NM_001001815, NM_001089420, NM_001037422, NM_131220, NM_213463, NM_213144, NM_131435, NM_001017724, NM_001025455, NM_001076557, NM_001002668, NM_001077391, NM_205601, NM_181601, NM_194376, NM_212857, NM_001003470, NM_201504, NM_200104, NM_131025, NM_131626, NM_213019, NM_199675, NM_130981, NM_214803, NM_200082, NM_214736, NM_178302, NM_001015068, NM_001017819, NM_213351, NM_199611, NM_131430, NM_201322, NM_001098730, NM_212603, NM_194374, NM_131232, NM_198978, NM_001037405, NM_200185, NM_131031, NM_201094, NM_199569, NM_001089409, NM_181439, NM_178303, NM_199679, NM_001003587, NM_131037, NM_212874, NM_001007281, NM_214683, NM_001003738, NM_001001825, NM_001077804, NM_001045158, NM_201186, NM_212893, NM_131340, NM_212717, NM_001001946, NM_199779, NM_131882, NM_199996, NM_001045105, NM_199833, NM_200278,

NM_001080583, NM_212991, NM_001076646, NM_001001818, NM_001077767, NM_213158, NM_213402, NM_213375, NM_213552, NM_131736, NM_001005582, NM_198210, NM_001080029, NM_213453, NM_001001592, NM_212933, NM_201336, NM_199649, NM_131433, NM_200096, NM_001013317, NM_131715, NM_213185, NM_213641, NM_213223, NM_130971, NM_199802, NM_001033595, NM_001007767, NM_001089428, NM_001077253, NM_001044855, NM_212880, NM_201101, NM_001017580, NM_212919, NM_131595, NM_001014348, NM_131563, NM_001045472, NM_213130, NM_200927, NM_212758, NM_001080033, NM_001100001, NM_131116

Confidence: 0.5

NM_200139, NM_199562, NM_213093, NM_001020702, NM_201295, NM_152974, NM_001002181, NM_001007159, NM_001102672, NM_001081629, NM_199697, NM_131302, NM_001002389, NM_199212, NM_001080044, NM_213172, NM_001040394, NM_201466, NM_001003839, NM_131714, NM_001076652, NM_131336, NM_001001815, NM_001089420, NM_001037422, NM_131220, NM_213463, NM_213144, NM_131435, NM_001017724, NM_001025455, NM_001076557, NM_001002668, NM_001077391, NM_205601, NM_181601, NM_194376, NM_212857, NM_001003470, NM_201504, NM_200104, NM_131025, NM_131626, NM_213019, NM_199675, NM_130981, NM_214803, NM_200082, NM_214736, NM_178302, NM_001015068, NM_001017819, NM_213351, NM_199611, NM_131430, NM_201322, NM_001098730, NM_212603, NM_194374, NM_131232, NM_198978, NM_001037405, NM_200185, NM_131031, NM_201094, NM_199569, NM_001089409, NM_181439, NM_178303, NM_199679, NM_001003587, NM_131037, NM_212874, NM_001007281, NM_214683, NM_001003738, NM_001001825, NM_001077804, NM_001045158, NM_201186, NM_212893, NM_131340, NM_212717, NM_001001946, NM_199779, NM_131882, NM_199996, NM_001045105, NM_199833, NM_200278, NM_001080583, NM_212991, NM_001076646, NM_001001818, NM_001077767, NM_213158, NM_213402, NM_213375, NM_213552, NM_131736, NM_001005582, NM_198210, NM_001080029, NM_213453, NM_001001592, NM_212933, NM_201336, NM_199649, NM_131433, NM_200096, NM_001013317, NM_131715, NM_213185, NM_213641, NM_213223, NM_130971, NM_199802, NM_001033595, NM_001007767, NM_001089428, NM_001077253, NM_001044855, NM_212880, NM_201101, NM_001017580, NM_212919, NM_131595, NM_001014348, NM_131563, NM_001045472, NM_213130, NM_200927, NM_212758, NM_001080033, NM_200441, NM_001100001, NM_131116

Confidence: 0.4

NM_001020702, NM_213093, NM_131302, NM_001002181, NM_199697, NM_001002389, NM_199562, NM_201466, NM_131714, NM_001003839, NM_001080044, NM_213172, NM_001081629, NM_199212, NM_001102672, NM_152974, NM_001040394, NM_131336, NM_001007159, NM_200139, NM_201295, NM_001076652, NM_131025, NM_001098730, NM_001077391, NM_001077804, NM_199996, NM_001025455, NM_131037, NM_212874, NM_001076557, NM_001007281, NM_201094, NM_212857, NM_198978, NM_201186, NM_001003470, NM_131220, NM_181601, NM_201504, NM_001002668, NM_131232, NM_131031, NM_199569, NM_001037422, NM_001037405, NM_001015068, NM_199611, NM_001045105, NM_001017819, NM_199675, NM_131430, NM_001003738, NM_214736, NM_205601, NM_001001815, NM_181439, NM_001017724, NM_199779, NM_131626, NM_212717, NM_213144, NM_130981, NM_200185, NM_200104, NM_001045158, NM_194376, NM_199679, NM_131882, NM_178302, NM_213463, NM_001003587, NM_213351, NM_001089409, NM_212893, NM_200082, NM_213019, NM_201322, NM_001001825, NM_001089420, NM_214683, NM_214803, NM_131435, NM_001001946, NM_212603, NM_194374, NM_178303, NM_131340, NM_001077767, NM_200096, NM_131563, NM_131595, NM_131715, NM_001077253, NM_001100001, NM_199833, NM_213402, NM_213185, NM_001080029, NM_212880, NM_213552, NM_001017580, NM_131736, NM_131116, NM_213641, NM_001080583, NM_213130, NM_001001818,

NM_200278, NM_199802, NM_201336, NM_001005582, NM_213375, NM_212758,
NM_001045472, NM_200441, NM_198210, NM_001044855, NM_001076646, NM_130971,
NM_001013317, NM_001014348, NM_001001592, NM_213223, NM_212919, NM_200927,
NM_001007767, NM_212933, NM_213453, NM_001089428, NM_199649, NM_213158,
NM_001033595, NM_201101, NM_001080033, NM_131433, NM_212991

Confidence: 0.3

NM_001020702, NM_213093, NM_131302, NM_001002181, NM_199697, NM_001002389,
NM_199562, NM_201466, NM_131714, NM_001003839, NM_001080044, NM_213172,
NM_001081629, NM_199212, NM_001102672, NM_152974, NM_001040394, NM_131336,
NM_001007159, NM_200139, NM_201295, NM_001076652, NM_131025, NM_001098730,
NM_001077391, NM_001077804, NM_199996, NM_001025455, NM_131037, NM_212874,
NM_001076557, NM_001007281, NM_201094, NM_212857, NM_198978, NM_201186,
NM_001003470, NM_131220, NM_181601, NM_201504, NM_001002668, NM_131232,
NM_131031, NM_199569, NM_001037422, NM_001037405, NM_001015068, NM_199611,
NM_001045105, NM_001017819, NM_199675, NM_131430, NM_001003738, NM_214736,
NM_205601, NM_001001815, NM_181439, NM_001017724, NM_199779, NM_131626,
NM_212717, NM_213144, NM_130981, NM_200185, NM_200104, NM_001045158,
NM_194376, NM_199679, NM_131882, NM_178302, NM_213463, NM_001003587,
NM_213351, NM_001089409, NM_212893, NM_200082, NM_213019, NM_201322,
NM_001001825, NM_001089420, NM_214683, NM_214803, NM_131435, NM_001001946,
NM_212603, NM_194374, NM_178303, NM_131340, NM_001077767, NM_200096,
NM_131563, NM_131595, NM_131715, NM_001077253, NM_001100001, NM_199833,
NM_213402, NM_213185, NM_001080029, NM_212880, NM_213552, NM_001017580,
NM_131736, NM_131116, NM_213641, NM_001080583, NM_213130, NM_001001818,
NM_200278, NM_199802, NM_201336, NM_001005582, NM_213375, NM_212758,
NM_001045472, NM_200441, NM_198210, NM_001044855, NM_001076646, NM_130971,
NM_001013317, NM_001014348, NM_001001592, NM_213223, NM_212919, NM_200927,
NM_001007767, NM_212933, NM_213453, NM_001089428, NM_199649, NM_213158,
NM_001033595, NM_201101, NM_001080033, NM_131433, NM_212991

Confidence: 0.2

NM_201466, NM_152974, NM_131336, NM_001007159, NM_001040394, NM_001003839,
NM_200139, NM_001076652, NM_001080044, NM_199697, NM_001102672, NM_213172,
NM_131714, NM_001020702, NM_001002389, NM_001081629, NM_199562, NM_199212,
NM_001002181, NM_201295, NM_131302, NM_213093, NM_001077391, NM_001017819,
NM_212717, NM_213463, NM_198978, NM_201322, NM_001007281, NM_001015068,
NM_212874, NM_131220, NM_178302, NM_001017724, NM_181439, NM_130981,
NM_199779, NM_212857, NM_001076557, NM_200185, NM_213351, NM_199675,
NM_205601, NM_131025, NM_001077804, NM_178303, NM_201186, NM_001003470,
NM_199569, NM_001045158, NM_131626, NM_212893, NM_199611, NM_200082,
NM_200104, NM_001002668, NM_194374, NM_001098730, NM_214736, NM_131882,
NM_131232, NM_201504, NM_001001815, NM_213019, NM_214683, NM_214803,
NM_001089420, NM_194376, NM_001003738, NM_001001946, NM_131435, NM_199996,
NM_001089409, NM_131037, NM_001037422, NM_131031, NM_131340, NM_001045105,
NM_213144, NM_201094, NM_199679, NM_001001825, NM_001037405, NM_001025455,
NM_212603, NM_181601, NM_131430, NM_001003587, NM_213185, NM_001076646,
NM_001001592, NM_001080029, NM_213453, NM_001044855, NM_131736, NM_200927,
NM_130971, NM_001007767, NM_199802, NM_213641, NM_213130, NM_213552,
NM_212991, NM_001013317, NM_001017580, NM_001080033, NM_001001818, NM_212933,
NM_001077253, NM_200096, NM_199649, NM_213375, NM_131595, NM_131715,
NM_198210, NM_212880, NM_131563, NM_001005582, NM_001045472, NM_131433,
NM_001100001, NM_131116, NM_201101, NM_201336, NM_213223, NM_001033595,

NM_001077767, NM_213158, NM_213402, NM_212919, NM_212758, NM_001089428,
NM_001080583, NM_200441, NM_199833, NM_001014348, NM_200278

Confidence: 0.1

NM_201466, NM_152974, NM_131336, NM_001007159, NM_001040394, NM_001003839,
NM_200139, NM_001076652, NM_001080044, NM_199697, NM_001102672, NM_213172,
NM_131714, NM_001020702, NM_001002389, NM_001081629, NM_199562, NM_199212,
NM_001002181, NM_201295, NM_131302, NM_213093, NM_001077391, NM_001017819,
NM_212717, NM_213463, NM_198978, NM_201322, NM_001007281, NM_001015068,
NM_212874, NM_131220, NM_178302, NM_001017724, NM_181439, NM_130981,
NM_199779, NM_212857, NM_001076557, NM_200185, NM_213351, NM_199675,
NM_205601, NM_131025, NM_001077804, NM_178303, NM_201186, NM_001003470,
NM_199569, NM_001045158, NM_131626, NM_212893, NM_199611, NM_200082,
NM_200104, NM_001002668, NM_194374, NM_001098730, NM_214736, NM_131882,
NM_131232, NM_201504, NM_001001815, NM_213019, NM_214683, NM_214803,
NM_001089420, NM_194376, NM_001003738, NM_001001946, NM_131435, NM_199996,
NM_001089409, NM_131037, NM_001037422, NM_131031, NM_131340, NM_001045105,
NM_213144, NM_201094, NM_199679, NM_001001825, NM_001037405, NM_001025455,
NM_212603, NM_181601, NM_131430, NM_001003587, NM_213185, NM_001076646,
NM_001001592, NM_001080029, NM_213453, NM_001044855, NM_131736, NM_200927,
NM_130971, NM_001007767, NM_199802, NM_213641, NM_213130, NM_213552,
NM_212991, NM_001013317, NM_001017580, NM_001080033, NM_001001818, NM_212933,
NM_001077253, NM_200096, NM_199649, NM_213375, NM_131595, NM_131715,
NM_198210, NM_212880, NM_131563, NM_001005582, NM_001045472, NM_131433,
NM_001100001, NM_131116, NM_201101, NM_201336, NM_213223, NM_001033595,
NM_001077767, NM_213158, NM_213402, NM_212919, NM_212758, NM_001089428,
NM_001080583, NM_200441, NM_199833, NM_001014348, NM_200278

Confidence: 0.0

NM_194378, NM_001002669, NM_001102672, NM_001080988, NM_001006021,
NM_001079970, NM_130971, NM_212878, NM_001089439, NM_001024438, NM_213031,
NM_001003499, NM_199708, NM_213556, NM_001080583, NM_001089471, NM_201466,
NM_001005964, NM_001002181, NM_199677, NM_001004296, NM_001003473,
NM_001017628, NM_001076652, NM_214686, NM_212933, NM_213158, NM_199577,
NM_213023, NM_207055, NM_001082877, NM_001080033, NM_131336, NM_001076646,
NM_212857, NM_001077733, NM_001018150, NM_001017660, NM_001098181,
NM_001080044, NM_001040394, NM_001098390, NM_001040347, NM_199697,
NM_001002389, NM_200139, NM_199562, NM_001020702, NM_199212, NM_201292,
NM_201053, NM_200341, NM_001003598, NM_001007159, NM_152974, NM_001003738,
NM_001045367, NM_205601, NM_001003520, NM_001080047, NM_131430, NM_131302,
NM_201471, NM_201058, NM_182878, NM_201576, NM_213093, NM_201295,
NM_001081629, NM_200969, NM_213133, NM_001017870, NM_001002717, NM_199716,
NM_131714, NM_203460, NM_207089, NM_001003839, NM_200185, NM_200769,
NM_213172, NM_001007281, NM_130986, NM_131459, NM_131143, NM_131435,
NM_214685, NM_001077804, NM_199996, NM_001020659, NM_181439, NM_001020729,
NM_001004677, NM_001045105, NM_001082885, NM_001082861, NM_213185, NM_200174,
NM_212893, NM_213168, NM_001033587, NM_194384, NM_213144, NM_001089409,
NM_199838, NM_001030236, NM_001005772, NM_001017819, NM_001002223, NM_131037,
NM_178303, NM_214683, NM_001082831, NM_213481, NM_200675, NM_214736,
NM_212887, NM_213447, NM_199779, NM_001001946, NM_001003470, NM_001043321,
NM_001007051, NM_130978, NM_131427, NM_131316, NM_200592, NM_200843,
NM_212874, NM_200423, NM_001030181, NM_199679, NM_001020627, NM_001017747,
NM_198366, NM_001005601, NM_131320, NM_001101678, NM_001079973, NM_001098730,

NM_213351, NM_001089435, NM_194376, NM_001025455, NM_198978, NM_201504,
NM_131886, NM_001004569, NM_131220, NM_131401, NM_213164, NM_213637,
NM_205711, NM_200609, NM_213019, NM_001045177, NM_173238, NM_131617,
NM_001076557, NM_213641, NM_194374, NM_201094, NM_201188, NM_001017756,
NM_001020525, NM_201345, NM_001045362, NM_212603, NM_001039971, NM_131481,
NM_131558, NM_131068, NM_001077763, NM_200759, NM_001077302, NM_213145,
NM_001089420, NM_199675, NM_001037384, NM_181601, NM_001001825, NM_198070,
NM_001045158, NM_001002668, NM_001013523, NM_131340, NM_131031, NM_200367,
NM_001020477, NM_194379, NM_201186, NM_199867, NM_213028, NM_200104,
NM_001040362, NM_001025545, NM_001002380, NM_201507, NM_131882, NM_131626,
NM_131025, NM_131404, NM_200955, NM_199965, NM_213300, NM_199569,
NM_001045260, NM_001017724, NM_001045156, NM_001002642, NM_001002205,
NM_178302, NM_001077282, NM_213463, NM_001003587, NM_001005980, NM_001034976,
NM_212717, NM_001002385, NM_001037422, NM_001003411, NM_001037405,
NM_001080663, NM_130912, NM_214816, NM_212610, NM_212704, NM_201026,
NM_001100962, NM_131850, NM_001002157, NM_130981, NM_131232, NM_131500,
NM_001077391, NM_001098193, NM_214803, NM_205549, NM_200906, NM_201322,
NM_001001815, NM_001018156, NM_001015068, NM_001037118, NM_131337, NM_200082,
NM_001020648, NM_199611, NM_212919, NM_200278, NM_001080667, NM_200143,
NM_213130, NM_001098256, NM_199713, NM_131595, NM_001045081, NM_212696,
NM_001007777, NM_001102637, NM_001089583, NM_199543, NM_199811, NM_001002165,
NM_213461, NM_201104, NM_213024, NM_001089570, NM_001082826, NM_213007,
NM_199537, NM_198067, NM_131448, NM_131716, NM_001001592, NM_001017580,
NM_001002152, NM_001098738, NM_199833, NM_001044855, NM_001044942, NM_131184,
NM_131563, NM_212758, NM_001013317, NM_200187, NM_200723, NM_200706,
NM_001045171, NM_001002688, NM_213453, NM_001098485, NM_200005, NM_001033595,
NM_001077370, NM_001005582, NM_131433, NM_001007767, NM_214770, NM_200588,
NM_001001818, NM_205743, NM_199772, NM_200419, NM_199731, NM_001076632,
NM_001089428, NM_001077767, NM_131572, NM_001077253, NM_131736, NM_001002558,
NM_001008606, NM_001003534, NM_001045472, NM_001002096, NM_131216,
NM_001002212, NM_200096, NM_213375, NM_205567, NM_213223, NM_199649,
NM_199625, NM_001002399, NM_131116, NM_131408, NM_001017728, NM_001014348,
NM_194380, NM_205718, NM_001030264, NM_152967, NM_001075113, NM_212991,
NM_212880, NM_001013533, NM_001002147, NM_200980, NM_001001949, NM_001002415,
NM_001100001, NM_213402, NM_001080029, NM_131867, NM_001040379, NM_001099417,
NM_001002484, NM_131715, NM_201488, NM_212746, NM_001039817, NM_201336,
NM_198210, NM_131038, NM_213552, NM_201101, NM_200927, NM_181764, NM_199802,
NM_001030092, NM_001099234, NM_001040377, NM_212587, NM_131609, NM_001045310,
NM_001005939, NM_001002511, NM_200441, NM_194366, NM_213505, NM_001089498,
NM_001002097, NM_131509

Supplementary Table 3: Target Predictions (5 fish alignment)

Given are the predicted target genes (RefSeq IDs) for miR-124, miR-133, and miR-206 at confidence levels between 0 and 0.9.

miR-124 targets (in alignments of 5 fish genomes)

Confidence: 0.9

NM_001098388, NM_131863, NM_201461, NM_001044911, NM_131427, NM_001045447, NM_131856, NM_001002471, NM_199992, NM_001002228, NM_001003781, NM_001099254, NM_201308, NM_001020595, NM_131862, NM_001001816, NM_213104, NM_131665, NM_001089352, NM_131686, NM_213538, NM_001030164, NM_130941, NM_212906, NM_214806, NM_212637, NM_199567, NM_201504, NM_001001818, NM_001040326, NM_213405, NM_001009918, NM_001017640, NM_001013538, NM_001045019, NM_212966, NM_001082901, NM_001077370, NM_212752, NM_001013278, NM_201480, NM_131311, NM_131193, NM_205566, NM_001003518, NM_001045143, NM_131044, NM_205644, NM_199744, NM_131499, NM_200629, NM_194380, NM_199658, NM_001025503, NM_200950, NM_200753, NM_212565, NM_131184, NM_205705

Confidence: 0.8

NM_001045487, NM_200773, NM_200639, NM_001098388, NM_001001409, NM_131863, NM_001009908, NM_001077259, NM_001007327, NM_001083826, NM_201461, NM_001076728, NM_001007403, NM_212687, NM_001007285, NM_200211, NM_131561, NM_001044911, NM_131427, NM_001035261, NM_131267, NM_205644, NM_001045447, NM_001004560, NM_131856, NM_001002471, NM_198805, NM_199992, NM_001024419, NM_001002228, NM_205674, NM_001003781, NM_001099254, NM_152978, NM_213439, NM_212689, NM_201308, NM_001005955, NM_001020595, NM_199212, NM_131862, NM_001001816, NM_213104, NM_213638, NM_213478, NM_131665, NM_001089352, NM_131686, NM_200088, NM_200971, NM_001044792, NM_213538, NM_001030164, NM_001100006, NM_001044709, NM_200753, NM_130941, NM_212906, NM_001014354, NM_001040245, NM_214806, NM_212637, NM_199567, NM_201504, NM_199479, NM_198338, NM_001001818, NM_213459, NM_001025526, NM_001002080, NM_001013445, NM_001081574, NM_001040326, NM_213405, NM_001009918, NM_001017640, NM_001013538, NM_001045019, NM_212966, NM_194396, NM_001001398, NM_001017552, NM_201471, NM_200507, NM_001077370, NM_001100008, NM_212752, NM_212794, NM_001013278, NM_199733, NM_201480, NM_001077535, NM_131311, NM_131193, NM_205726, NM_205566, NM_001083812, NM_001080590, NM_001089498, NM_199868, NM_213516, NM_001007771, NM_001014365, NM_001003518, NM_212585, NM_200441, NM_001045143, NM_131670, NM_199983, NM_131044, NM_131452, NM_199744, NM_201454, NM_131499, NM_001007135, NM_200629, NM_194380, NM_001007775, NM_199658, NM_001007309, NM_001025503, NM_200950, NM_001045349, NM_001044927, NM_001007440, NM_001045219, NM_001002655, NM_001030101, NM_212565, NM_194378, NM_207060, NM_001002467, NM_201509, NM_173283, NM_001007366, NM_131184, NM_212588, NM_199754, NM_205705, NM_001020656

Confidence: 0.7

NM_001045487, NM_200773, NM_001039358, NM_200639, NM_001098388, NM_001045412, NM_201301, NM_001001409, NM_131863, NM_001005292, NM_001009908, NM_001077259, NM_001007327, NM_001083826, NM_199865, NM_001002214, NM_201461, NM_001076728, NM_001007403, NM_212687, NM_001007285, NM_001020656, NM_131872, NM_001009900, NM_200211, NM_131561, NM_200249, NM_001044911, NM_131427, NM_001035261, NM_212965, NM_131267, NM_205644, NM_001045447, NM_001002467, NM_001004560,

NM_131856, NM_001002471, NM_198805, NM_199992, NM_001002207, NM_001024419, NM_001002228, NM_213506, NM_205674, NM_001003781, NM_001099254, NM_001008609, NM_152978, NM_213439, NM_200410, NM_212689, NM_201308, NM_001005955, NM_001020595, NM_199212, NM_131862, NM_200201, NM_001001816, NM_213104, NM_213638, NM_213478, NM_001033099, NM_131665, NM_001089352, NM_131686, NM_001039804, NM_200088, NM_200971, NM_001044792, NM_213538, NM_001030164, NM_001100006, NM_001044709, NM_200753, NM_130941, NM_212906, NM_001014354, NM_001040245, NM_001002227, NM_199706, NM_214806, NM_212637, NM_199567, NM_201504, NM_001098490, NM_199479, NM_198338, NM_001001818, NM_213459, NM_001025526, NM_200649, NM_001002080, NM_001013445, NM_001081574, NM_001040326, NM_131520, NM_213405, NM_001009918, NM_212562, NM_001017640, NM_001013538, NM_001045019, NM_130997, NM_212966, NM_194396, NM_001001398, NM_001017552, NM_201471, NM_200507, NM_001077370, NM_001077391, NM_001100008, NM_199480, NM_212752, NM_212794, NM_131260, NM_001030112, NM_001013278, NM_199733, NM_201480, NM_001077535, NM_131311, NM_131193, NM_205726, NM_205566, NM_001083812, NM_001014365, NM_001080590, NM_001089498, NM_199868, NM_213516, NM_001007771, NM_001003518, NM_212585, NM_200441, NM_001045143, NM_001039838, NM_131670, NM_199983, NM_131044, NM_131452, NM_199744, NM_213640, NM_201454, NM_131499, NM_001007135, NM_200629, NM_001077799, NM_194380, NM_001007775, NM_199658, NM_001007309, NM_001007406, NM_001025503, NM_200950, NM_001045349, NM_001044927, NM_001007440, NM_001045219, NM_001002655, NM_001030101, NM_212565, NM_194378, NM_207060, NM_201509, NM_173283, NM_001007366, NM_131184, NM_212588, NM_199754, NM_212685, NM_205705

Confidence: 0.6

NM_199706, NM_001020656, NM_212966, NM_152978, NM_001040245, NM_001089352, NM_212687, NM_212794, NM_001025526, NM_205726, NM_001081574, NM_194396, NM_200971, NM_001009900, NM_001001409, NM_001007327, NM_001044792, NM_001040326, NM_001077535, NM_199480, NM_131686, NM_001039804, NM_201308, NM_001045019, NM_001099254, NM_131863, NM_001077259, NM_001100008, NM_001083812, NM_213538, NM_131799, NM_200773, NM_198338, NM_001033099, NM_198871, NM_199733, NM_205678, NM_001002227, NM_213506, NM_213052, NM_212637, NM_001035261, NM_213439, NM_001001398, NM_131276, NM_131520, NM_131665, NM_201471, NM_001044911, NM_199567, NM_001083826, NM_131311, NM_198805, NM_212752, NM_201504, NM_001076728, NM_001020595, NM_131427, NM_001030164, NM_001024419, NM_131856, NM_213528, NM_213104, NM_199865, NM_001002214, NM_001098388, NM_131260, NM_130997, NM_199479, NM_213638, NM_131193, NM_212906, NM_001100006, NM_001007403, NM_001002471, NM_205566, NM_212562, NM_001017640, NM_001013538, NM_201461, NM_200881, NM_131872, NM_001002228, NM_001080590, NM_001009918, NM_205644, NM_200211, NM_200249, NM_213405, NM_001001818, NM_001077767, NM_130941, NM_131561, NM_212965, NM_001007285, NM_001017552, NM_214806, NM_200753, NM_212689, NM_201480, NM_001013278, NM_001003781, NM_001077391, NM_001014354, NM_200649, NM_200088, NM_001044709, NM_001002207, NM_001008609, NM_201301, NM_001098490, NM_200507, NM_001082901, NM_213459, NM_001002080, NM_001014365, NM_001002467, NM_131862, NM_200410, NM_001009908, NM_001045447, NM_200201, NM_001045487, NM_001045412, NM_205674, NM_001077370, NM_131267, NM_001005955, NM_001039358, NM_131621, NM_001005292, NM_001004560, NM_213478, NM_001001816, NM_001030112, NM_199992, NM_001013445, NM_200639, NM_199212, NM_201154, NM_199754, NM_212588, NM_001007135, NM_001089498, NM_213395, NM_199658, NM_205705, NM_200629, NM_200950, NM_001025503, NM_001007366, NM_194378, NM_194380, NM_001077799, NM_199744, NM_131670, NM_212685, NM_001045143, NM_131499, NM_001002655, NM_001007771, NM_200441, NM_001045219, NM_213640, NM_199868, NM_001039838,

NM_212565, NM_199983, NM_207060, NM_001030101, NM_001004529, NM_001007309,
NM_131044, NM_001007775, NM_201454, NM_001044927, NM_173283, NM_131452,
NM_001007440, NM_001045349, NM_213516, NM_001007406, NM_001003518, NM_201509,
NM_212585, NM_131184

Confidence: 0.5

NM_001001816, NM_001045412, NM_001030164, NM_001002227, NM_205678, NM_200249,
NM_212689, NM_001076728, NM_214806, NM_001007403, NM_001001398, NM_001030112,
NM_001001409, NM_001002207, NM_001040245, NM_205566, NM_199992, NM_001014354,
NM_200507, NM_130997, NM_212562, NM_131561, NM_131621, NM_212637,
NM_001002471, NM_131311, NM_001009908, NM_199479, NM_001077370, NM_001013445,
NM_001100008, NM_200211, NM_001024419, NM_001077259, NM_201301, NM_001025526,
NM_131665, NM_001077767, NM_201471, NM_001039358, NM_001082901, NM_001005955,
NM_001005292, NM_001044911, NM_001008609, NM_131863, NM_131260, NM_213459,
NM_131427, NM_001002228, NM_001040326, NM_212752, NM_201308, NM_001077391,
NM_213439, NM_198871, NM_001007327, NM_205644, NM_201480, NM_198805,
NM_001020586, NM_200649, NM_212965, NM_131872, NM_212687, NM_131686,
NM_213528, NM_200881, NM_131267, NM_001035261, NM_001013538, NM_001004560,
NM_198338, NM_199212, NM_199706, NM_001017640, NM_001002467, NM_200410,
NM_001100006, NM_001083826, NM_001077535, NM_001020595, NM_001044792,
NM_001098490, NM_001009918, NM_131276, NM_001001818, NM_001002214,
NM_001044709, NM_001009900, NM_001089352, NM_131799, NM_001007285,
NM_001033099, NM_200201, NM_212966, NM_001081574, NM_201154, NM_194396,
NM_213052, NM_213405, NM_131856, NM_131193, NM_213638, NM_001017552,
NM_001003781, NM_200773, NM_001012497, NM_001080590, NM_001098388, NM_205674,
NM_001013278, NM_001045487, NM_201461, NM_199480, NM_212794, NM_201504,
NM_199865, NM_001045019, NM_152978, NM_200971, NM_001083812, NM_200753,
NM_001020656, NM_001014365, NM_200088, NM_199567, NM_213506, NM_001002080,
NM_213104, NM_213478, NM_213538, NM_001039804, NM_130941, NM_001099254,
NM_205726, NM_001045447, NM_200639, NM_199733, NM_131862, NM_212906,
NM_131520, NM_001045143, NM_212588, NM_131044, NM_001089498, NM_199983,
NM_001077799, NM_212585, NM_207060, NM_199656, NM_001007366, NM_001030101,
NM_001007440, NM_212565, NM_213395, NM_001025503, NM_001007406, NM_131670,
NM_131452, NM_131499, NM_198910, NM_001007309, NM_001004529, NM_199754,
NM_001002655, NM_001045219, NM_214815, NM_200441, NM_001007771, NM_201454,
NM_001039838, NM_173259, NM_001044927, NM_213516, NM_201509, NM_001012312,
NM_194380, NM_213111, NM_194378, NM_001045349, NM_200629, NM_001007775,
NM_199658, NM_200950, NM_001007135, NM_131184, NM_205705, NM_213640,
NM_199744, NM_199868, NM_001003518, NM_212685, NM_173283, NM_001007216

Confidence: 0.4

NM_001001816, NM_001045412, NM_001030164, NM_001002227, NM_205678, NM_200249,
NM_212689, NM_001076728, NM_214806, NM_001007403, NM_001001398, NM_001030112,
NM_001001409, NM_001002207, NM_001040245, NM_205566, NM_199992, NM_001014354,
NM_200507, NM_130997, NM_212562, NM_131561, NM_131621, NM_212637,
NM_001002471, NM_131311, NM_001009908, NM_199479, NM_001077370, NM_001013445,
NM_001100008, NM_200211, NM_001024419, NM_001077259, NM_201301, NM_001025526,
NM_131665, NM_001077767, NM_201471, NM_001039358, NM_001082901, NM_001005955,
NM_001005292, NM_001044911, NM_001008609, NM_131863, NM_131260, NM_213459,
NM_131427, NM_001002228, NM_001040326, NM_212752, NM_201308, NM_001077391,
NM_213439, NM_198871, NM_001007327, NM_205644, NM_201480, NM_198805,
NM_001020586, NM_200649, NM_212965, NM_131872, NM_212687, NM_131686,
NM_213528, NM_200881, NM_131267, NM_001035261, NM_001013538, NM_001004560,

NM_198338, NM_199212, NM_199706, NM_001017640, NM_001002467, NM_200410, NM_001100006, NM_001083826, NM_001077535, NM_001020595, NM_001044792, NM_001098490, NM_001009918, NM_131276, NM_001001818, NM_001002214, NM_001044709, NM_001009900, NM_001089352, NM_131799, NM_001007285, NM_001033099, NM_200201, NM_212966, NM_001081574, NM_201154, NM_194396, NM_213052, NM_213405, NM_131856, NM_131193, NM_213638, NM_001017552, NM_001003781, NM_200773, NM_001012497, NM_001080590, NM_001098388, NM_205674, NM_001013278, NM_001045487, NM_201461, NM_199480, NM_212794, NM_201504, NM_199865, NM_001045019, NM_152978, NM_200971, NM_001083812, NM_200753, NM_001020656, NM_001014365, NM_200088, NM_199567, NM_213506, NM_001002080, NM_213104, NM_213478, NM_213538, NM_001039804, NM_130941, NM_001099254, NM_205726, NM_001045447, NM_200639, NM_199733, NM_131862, NM_212906, NM_131520, NM_001045143, NM_212588, NM_131044, NM_001089498, NM_199983, NM_213520, NM_001077799, NM_212585, NM_207060, NM_199656, NM_001007366, NM_001030101, NM_001007440, NM_212565, NM_213395, NM_001025503, NM_001007406, NM_131670, NM_131452, NM_131499, NM_198910, NM_001007309, NM_001004529, NM_199754, NM_001002655, NM_001045219, NM_214815, NM_200441, NM_001007771, NM_201454, NM_001039838, NM_173259, NM_001044927, NM_213516, NM_201509, NM_001012312, NM_194380, NM_213111, NM_194378, NM_001045349, NM_200629, NM_001007775, NM_199658, NM_200950, NM_001007135, NM_131184, NM_205705, NM_213640, NM_199744, NM_199868, NM_001003518, NM_212685, NM_173283, NM_001007216

Confidence: 0.3

NM_201480, NM_199480, NM_001076728, NM_001012497, NM_131665, NM_212906, NM_199567, NM_001083826, NM_131267, NM_001013278, NM_213104, NM_001045487, NM_001077370, NM_201154, NM_001030112, NM_131561, NM_001007403, NM_213478, NM_212965, NM_001098388, NM_131276, NM_131520, NM_001044709, NM_001002214, NM_001099254, NM_199992, NM_205674, NM_212689, NM_194396, NM_213405, NM_001100006, NM_131862, NM_001083812, NM_001017640, NM_001013538, NM_200507, NM_201301, NM_152978, NM_199479, NM_001081574, NM_200753, NM_214806, NM_212966, NM_001045447, NM_001002467, NM_001002080, NM_199212, NM_001077767, NM_001008609, NM_001003781, NM_200201, NM_001014365, NM_199706, NM_130997, NM_212562, NM_201308, NM_198338, NM_201504, NM_130941, NM_001098490, NM_131863, NM_001007285, NM_200249, NM_001025526, NM_200088, NM_213528, NM_001030164, NM_131872, NM_001080590, NM_001002207, NM_001017552, NM_131311, NM_001009900, NM_213439, NM_213052, NM_001001409, NM_199733, NM_001001816, NM_200639, NM_001005955, NM_200211, NM_001100008, NM_001002471, NM_205644, NM_001082901, NM_001005292, NM_131621, NM_131686, NM_131799, NM_213538, NM_001033099, NM_001013445, NM_131856, NM_001040245, NM_001077391, NM_200773, NM_001020656, NM_198871, NM_001089352, NM_200649, NM_213506, NM_001045019, NM_001004560, NM_199865, NM_001009908, NM_001077535, NM_001044911, NM_131193, NM_001040326, NM_001024419, NM_201461, NM_212752, NM_001077259, NM_205726, NM_001001818, NM_205678, NM_001001398, NM_001007327, NM_001002227, NM_212637, NM_213459, NM_001044792, NM_001039804, NM_212687, NM_200881, NM_001045412, NM_198805, NM_001039358, NM_131427, NM_001009918, NM_212794, NM_001035261, NM_213638, NM_001020586, NM_205566, NM_131260, NM_001014354, NM_201471, NM_001002228, NM_200971, NM_001020595, NM_200410, NM_200950, NM_131670, NM_001045143, NM_212685, NM_131044, NM_001030101, NM_001007135, NM_001089498, NM_198910, NM_001007216, NM_173283, NM_131499, NM_001007771, NM_131184, NM_212588, NM_213395, NM_001044927, NM_131452, NM_200441, NM_213111, NM_212565, NM_199744, NM_213640, NM_213516, NM_001002655, NM_207060, NM_001039838, NM_001007440, NM_001007366, NM_173259, NM_199656, NM_199754,

NM_194380, NM_001077799, NM_201454, NM_001007406, NM_001045349, NM_194378,
NM_199983, NM_001012312, NM_213520, NM_001004529, NM_201509, NM_001045219,
NM_199868, NM_001003518, NM_212585, NM_205705, NM_001007309, NM_200629,
NM_214815, NM_001007775, NM_199658, NM_001025503

Confidence: 0.2

NM_201480, NM_199480, NM_001076728, NM_001012497, NM_131665, NM_212906,
NM_199567, NM_001083826, NM_131267, NM_001013278, NM_213104, NM_001045487,
NM_001077370, NM_201154, NM_001030112, NM_131561, NM_001007403, NM_213478,
NM_212965, NM_001098388, NM_131276, NM_131520, NM_001044709, NM_001002214,
NM_001099254, NM_199992, NM_205674, NM_212689, NM_194396, NM_213405,
NM_001100006, NM_131862, NM_001083812, NM_001017640, NM_001013538, NM_200507,
NM_201301, NM_152978, NM_199479, NM_001081574, NM_200753, NM_214806,
NM_212966, NM_001045447, NM_001002467, NM_001002080, NM_199212, NM_001077767,
NM_001008609, NM_001003781, NM_200201, NM_001014365, NM_199706, NM_130997,
NM_212562, NM_201308, NM_198338, NM_201504, NM_130941, NM_001098490,
NM_131863, NM_001007285, NM_200249, NM_001025526, NM_200088, NM_213528,
NM_001030164, NM_131872, NM_001080590, NM_001002207, NM_001017552, NM_131311,
NM_001009900, NM_213439, NM_213052, NM_001001409, NM_199733, NM_001001816,
NM_200639, NM_001005955, NM_200211, NM_001100008, NM_001002471, NM_205644,
NM_001082901, NM_001005292, NM_131621, NM_131686, NM_131799, NM_213538,
NM_001033099, NM_001013445, NM_131856, NM_001040245, NM_001077391, NM_200773,
NM_001020656, NM_198871, NM_001089352, NM_200649, NM_213506, NM_001045019,
NM_001004560, NM_199865, NM_001009908, NM_001077535, NM_001044911, NM_131193,
NM_001040326, NM_001024419, NM_201461, NM_212752, NM_001077259, NM_205726,
NM_001001818, NM_205678, NM_001001398, NM_001007327, NM_001002227, NM_212637,
NM_213459, NM_001044792, NM_001039804, NM_212687, NM_200881, NM_001045412,
NM_198805, NM_001039358, NM_131427, NM_001009918, NM_212794, NM_001035261,
NM_213638, NM_001020586, NM_205566, NM_131260, NM_001014354, NM_201471,
NM_001002228, NM_200971, NM_001020595, NM_200410, NM_200950, NM_131670,
NM_001045143, NM_212685, NM_131044, NM_001030101, NM_001007135, NM_001089498,
NM_198910, NM_001007216, NM_173283, NM_131499, NM_001007771, NM_131184,
NM_212588, NM_213395, NM_001044927, NM_131452, NM_200441, NM_213111,
NM_212565, NM_199744, NM_213640, NM_213516, NM_001002655, NM_207060,
NM_001039838, NM_001007440, NM_001007366, NM_173259, NM_199656, NM_199754,
NM_194380, NM_001077799, NM_201454, NM_001007406, NM_001045349, NM_194378,
NM_199983, NM_001012312, NM_213520, NM_001004529, NM_201509, NM_001045219,
NM_199868, NM_001003518, NM_212585, NM_205705, NM_001007309, NM_200629,
NM_214815, NM_001007775, NM_199658, NM_001025503

Confidence: 0.1

NM_001025526, NM_213052, NM_001083812, NM_205674, NM_201301, NM_001082901,
NM_001009908, NM_201504, NM_131799, NM_131872, NM_001077370, NM_131260,
NM_201480, NM_001098490, NM_205678, NM_200971, NM_001098388, NM_199479,
NM_199733, NM_001045487, NM_001001816, NM_001012497, NM_001045447,
NM_001100008, NM_001002471, NM_213104, NM_001013538, NM_205726, NM_001002080,
NM_213506, NM_152978, NM_199567, NM_001007403, NM_131427, NM_213528,
NM_001005292, NM_212752, NM_194396, NM_131193, NM_001020586, NM_001013445,
NM_001099254, NM_199865, NM_205644, NM_212966, NM_001002214, NM_001009918,
NM_001080590, NM_200201, NM_001077391, NM_001001398, NM_001083826, NM_213638,
NM_001044792, NM_131621, NM_001044911, NM_001002207, NM_001024419, NM_201461,
NM_213439, NM_001008609, NM_001020656, NM_131665, NM_201308, NM_001017552,
NM_200753, NM_130997, NM_001035261, NM_205566, NM_200249, NM_131561,

NM_199480, NM_131267, NM_213538, NM_212689, NM_131311, NM_200881,
NM_001044709, NM_001017640, NM_001045019, NM_212965, NM_200507, NM_200410,
NM_199212, NM_001002467, NM_213405, NM_200211, NM_001013278, NM_199992,
NM_213478, NM_131863, NM_001002228, NM_130941, NM_001045412, NM_201471,
NM_198871, NM_001005955, NM_001077259, NM_001076728, NM_214806, NM_001100006,
NM_131856, NM_131686, NM_001077535, NM_001077767, NM_001030164, NM_198338,
NM_200639, NM_001089352, NM_001004560, NM_199706, NM_131520, NM_001040245,
NM_001001818, NM_001014354, NM_212637, NM_001014365, NM_001020595,
NM_001081574, NM_212562, NM_212794, NM_001001409, NM_001039358, NM_212906,
NM_201154, NM_001039804, NM_131862, NM_001002227, NM_001040326, NM_213459,
NM_001003781, NM_001033099, NM_001009900, NM_001007327, NM_001030112,
NM_200773, NM_200649, NM_200088, NM_131276, NM_212687, NM_001007285,
NM_198805, NM_173259, NM_001007366, NM_200441, NM_212565, NM_199656,
NM_213520, NM_001089498, NM_199983, NM_214815, NM_131452, NM_213111,
NM_001025503, NM_001044927, NM_199744, NM_173283, NM_207060, NM_001045219,
NM_198910, NM_194378, NM_194380, NM_199754, NM_212685, NM_201454,
NM_001002655, NM_200629, NM_001007406, NM_213640, NM_213516, NM_001045143,
NM_001012312, NM_131499, NM_212585, NM_001039838, NM_199868, NM_001004529,
NM_199658, NM_001003518, NM_131184, NM_001045349, NM_131670, NM_001007135,
NM_001007440, NM_212588, NM_001030101, NM_200950, NM_001007309, NM_001077799,
NM_213395, NM_201509, NM_001007771, NM_131044, NM_205705, NM_001007216,
NM_001007775

Confidence: 0.0

NM_200326, NM_131505, NM_200201, NM_001077391, NM_001076728, NM_001029973,
NM_198910, NM_199950, NM_205584, NM_001098264, NM_001020554, NM_001003556,
NM_200062, NM_131427, NM_001003617, NM_201288, NM_131496, NM_001039816,
NM_001040326, NM_001002651, NM_131562, NM_001018150, NM_152959, NM_131809,
NM_001012367, NM_001007120, NM_001012497, NM_001020667, NM_131883, NM_212827,
NM_130973, NM_001030072, NM_200826, NM_200640, NM_001002573, NM_212896,
NM_200895, NM_199855, NM_001077609, NM_001039804, NM_001081574, NM_001035261,
NM_001077614, NM_001080600, NM_001017882, NM_001077279, NM_212563, NM_131276,
NM_001020525, NM_201198, NM_001009900, NM_200753, NM_213326, NM_001033103,
NM_200814, NM_001044792, NM_198338, NM_001080586, NM_201325, NM_131719,
NM_001002162, NM_001007285, NM_001014354, NM_131264, NM_001002669,
NM_001025450, NM_001003515, NM_213192, NM_200680, NM_213439, NM_201308,
NM_199640, NM_183338, NM_001004560, NM_001045413, NM_001080640, NM_201504,
NM_212725, NM_213640, NM_001002471, NM_001013562, NM_001020695, NM_213111,
NM_212794, NM_199692, NM_001020631, NM_212730, NM_001017706, NM_199939,
NM_001004014, NM_199479, NM_201301, NM_001009918, NM_001020487, NM_001001409,
NM_001017780, NM_001077767, NM_001007447, NM_001009987, NM_001098388,
NM_212708, NM_200521, NM_001002454, NM_205644, NM_001089369, NM_001008609,
NM_001007048, NM_001002645, NM_181766, NM_001080606, NM_200903, NM_178131,
NM_131686, NM_199212, NM_001080085, NM_131561, NM_001007305, NM_205566,
NM_212574, NM_214707, NM_205757, NM_001013533, NM_199849, NM_200700,
NM_001002104, NM_201150, NM_213528, NM_194396, NM_131799, NM_001045250,
NM_001045311, NM_001020519, NM_001014365, NM_001025456, NM_001002364,
NM_212687, NM_001014301, NM_001020649, NM_201471, NM_212562, NM_212809,
NM_205745, NM_001083841, NM_001002746, NM_001044977, NM_001044791,
NM_001077599, NM_001077535, NM_199842, NM_198871, NM_001017864, NM_001080590,
NM_001040370, NM_001099977, NM_214691, NM_001044774, NM_001030103,
NM_001020581, NM_212866, NM_001037580, NM_001008581, NM_200211, NM_001002144,
NM_001040292, NM_001080044, NM_001037428, NM_131520, NM_213504, NM_001045412,

NM_213634, NM_001083812, NM_001100008, NM_001076599, NM_131503, NM_001002318, NM_194416, NM_001007316, NM_001017901, NM_001030138, NM_001001729, NM_181765, NM_213478, NM_200190, NM_213353, NM_199865, NM_001040324, NM_199740, NM_200312, NM_001045447, NM_001006081, NM_200971, NM_001025467, NM_131621, NM_205565, NM_198808, NM_212825, NM_199848, NM_001002228, NM_131078, NM_001004643, NM_001008601, NM_001001847, NM_001018131, NM_001005999, NM_001045374, NM_205678, NM_001033099, NM_001014300, NM_001077742, NM_001012483, NM_001077803, NM_001025460, NM_199706, NM_212752, NM_181736, NM_001020714, NM_200881, NM_001013307, NM_199780, NM_131717, NM_001045487, NM_001004296, NM_212669, NM_001045019, NM_199567, NM_212674, NM_200859, NM_001003638, NM_199819, NM_001003513, NM_001003643, NM_201120, NM_213312, NM_001001818, NM_170763, NM_001007327, NM_200930, NM_200340, NM_130989, NM_212657, NM_001025301, NM_213104, NM_001045076, NM_001082901, NM_001003626, NM_131311, NM_001013560, NM_001008624, NM_199876, NM_001003570, NM_200639, NM_001007315, NM_199942, NM_001013538, NM_001077765, NM_199668, NM_001020607, NM_001013482, NM_001045189, NM_001002109, NM_001045125, NM_199673, NM_001098391, NM_001099423, NM_001030203, NM_212966, NM_001017817, NM_213538, NM_001003744, NM_001001398, NM_001013340, NM_001077288, NM_214774, NM_001079955, NM_001089355, NM_212824, NM_001040245, NM_001045368, NM_001045182, NM_212893, NM_001002227, NM_001044862, NM_173244, NM_001002102, NM_201334, NM_001045434, NM_200554, NM_001020586, NM_212685, NM_131863, NM_181735, NM_001017602, NM_001089404, NM_001017796, NM_200221, NM_001089473, NM_001044911, NM_200667, NM_001077259, NM_205665, NM_205726, NM_200858, NM_214806, NM_130941, NM_001008574, NM_001017779, NM_200204, NM_001083548, NM_001020701, NM_201305, NM_201499, NM_001002328, NM_131768, NM_001045405, NM_001076736, NM_001100006, NM_199806, NM_001045327, NM_001077629, NM_200261, NM_001037409, NM_200577, NM_199941, NM_001013537, NM_001013351, NM_182859, NM_200773, NM_201154, NM_199858, NM_201215, NM_001004119, NM_199733, NM_212965, NM_001077370, NM_131553, NM_001013273, NM_001080082, NM_212627, NM_200440, NM_001025526, NM_201480, NM_001030124, NM_207050, NM_001017552, NM_213459, NM_001002630, NM_001005997, NM_001039994, NM_201463, NM_131857, NM_200088, NM_001007354, NM_131267, NM_001044709, NM_001044778, NM_201189, NM_001100962, NM_131862, NM_131458, NM_001020521, NM_001077740, NM_200805, NM_001030112, NM_001002613, NM_199898, NM_001089528, NM_001025184, NM_001089403, NM_001002214, NM_213638, NM_205659, NM_200666, NM_001099254, NM_001007403, NM_200602, NM_001004546, NM_131260, NM_001030164, NM_001004607, NM_001002075, NM_001045091, NM_001020764, NM_001077579, NM_001100086, NM_213374, NM_001100022, NM_001002080, NM_001001816, NM_001082828, NM_200649, NM_152978, NM_001007325, NM_213501, NM_001003619, NM_131373, NM_200906, NM_001039358, NM_001002193, NM_001080614, NM_200507, NM_201486, NM_001017771, NM_199536, NM_131885, NM_200642, NM_199480, NM_001099230, NM_201092, NM_001018135, NM_200498, NM_001024419, NM_001044933, NM_001098176, NM_199992, NM_199715, NM_001045175, NM_198805, NM_001004635, NM_001089414, NM_212891, NM_200890, NM_131665, NM_001080654, NM_001039924, NM_001083827, NM_131856, NM_001077734, NM_200613, NM_001008579, NM_212869, NM_001002421, NM_131457, NM_001004618, NM_001008584, NM_212874, NM_001099990, NM_199897, NM_212935, NM_213446, NM_001044904, NM_001098490, NM_212810, NM_001002338, NM_212940, NM_001037375, NM_001080642, NM_001002872, NM_200410, NM_203461, NM_131193, NM_001002598, NM_213052, NM_212602, NM_001039513, NM_001045085, NM_212857, NM_200856, NM_200080, NM_001004606, NM_213304, NM_001079993, NM_001002725, NM_001003765, NM_200332, NM_001020489, NM_198911, NM_001014332, NM_001045472, NM_131112, NM_200249, NM_001013552, NM_213101, NM_001008616, NM_212906, NM_001013278, NM_001045264, NM_131098, NM_001017640, NM_001007060,

NM_001098777, NM_001018151, NM_131624, NM_213422, NM_001009908, NM_001020477, NM_001005955, NM_212637, NM_001045117, NM_001082820, NM_001007168, NM_001044927, NM_213405, NM_199731, NM_001099420, NM_001089494, NM_001007359, NM_001040384, NM_200372, NM_178437, NM_213410, NM_212689, NM_001005292, NM_200159, NM_200034, NM_001020595, NM_001045169, NM_201199, NM_001020656, NM_001004568, NM_131872, NM_213141, NM_001008595, NM_001045235, NM_001089352, NM_213457, NM_001044915, NM_001014294, NM_001013445, NM_205544, NM_001083826, NM_201461, NM_131855, NM_001005931, NM_131140, NM_205674, NM_200208, NM_214815, NM_199766, NM_201309, NM_001025177, NM_001002550, NM_001044967, NM_001008644, NM_001002207, NM_001004561, NM_153643, NM_213506, NM_001002151, NM_001080580, NM_001002212, NM_001003781, NM_001002467, NM_130997, NM_213176, NM_001004539, NM_131843, NM_183410, NM_200600, NM_001002129, NM_199879, NM_001044766, NM_001045147, NM_001099445, NM_131670, NM_213064, NM_200023, NM_200998, NM_001004529, NM_194380, NM_001002188, NM_199625, NM_214682, NM_001013350, NM_173277, NM_212588, NM_212779, NM_205707, NM_001005939, NM_001077555, NM_130922, NM_001080012, NM_199868, NM_001076650, NM_001082873, NM_131749, NM_131159, NM_001017607, NM_199599, NM_001040304, NM_001002754, NM_207060, NM_001020579, NM_212772, NM_001040035, NM_001017598, NM_212963, NM_001003990, NM_001045219, NM_200619, NM_001045349, NM_001008650, NM_131282, NM_001013559, NM_200884, NM_001005394, NM_131069, NM_213271, NM_200950, NM_153660, NM_001045276, NM_212677, NM_001007449, NM_001003557, NM_001004597, NM_001006079, NM_001031837, NM_001007055, NM_001007775, NM_199624, NM_201175, NM_001002192, NM_199754, NM_200140, NM_001037412, NM_213497, NM_205579, NM_001002444, NM_173276, NM_001006072, NM_001044932, NM_200838, NM_001002180, NM_131432, NM_173259, NM_001020717, NM_131219, NM_001030247, NM_001045299, NM_001033104, NM_001003533, NM_001002692, NM_001045301, NM_212702, NM_201151, NM_001003646, NM_001003460, NM_001083033, NM_001002090, NM_205751, NM_214770, NM_213395, NM_001083814, NM_213456, NM_131663, NM_001004015, NM_199699, NM_001044830, NM_001083016, NM_001002073, NM_001089514, NM_001001814, NM_001080164, NM_212803, NM_173218, NM_001025552, NM_001099426, NM_205717, NM_001045263, NM_201174, NM_001103120, NM_001030067, NM_213371, NM_131044, NM_001004515, NM_201495, NM_199545, NM_001044870, NM_205705, NM_001044341, NM_001002700, NM_131370, NM_001005942, NM_200629, NM_194405, NM_001002686, NM_131348, NM_199658, NM_001079677, NM_001007216, NM_131539, NM_001003449, NM_212701, NM_201336, NM_205549, NM_213533, NM_001045161, NM_001034976, NM_200877, NM_001099246, NM_201449, NM_131532, NM_213516, NM_001030217, NM_201454, NM_213252, NM_001013484, NM_199894, NM_198984, NM_001020744, NM_001017819, NM_205716, NM_001002650, NM_201298, NM_212585, NM_001007440, NM_130978, NM_212590, NM_001009897, NM_212712, NM_001083836, NM_200780, NM_181496, NM_001008654, NM_001080585, NM_201139, NM_130966, NM_205570, NM_001044982, NM_001081747, NM_001082848, NM_001007406, NM_131139, NM_131604, NM_001013573, NM_001079997, NM_199983, NM_001039838, NM_001089524, NM_001080634, NM_001100030, NM_001076613, NM_001007328, NM_194378, NM_201509, NM_001003566, NM_001045329, NM_001045143, NM_200078, NM_001004542, NM_001089507, NM_213520, NM_001003632, NM_213060, NM_131509, NM_001029966, NM_001045464, NM_198909, NM_213251, NM_001098387, NM_001082893, NM_001002392, NM_001025550, NM_001089498, NM_001045846, NM_194371, NM_131184, NM_200656, NM_001080605, NM_200257, NM_199621, NM_001002306, NM_001033108, NM_131502, NM_212983, NM_131757, NM_001089356, NM_205637, NM_001018126, NM_201025, NM_001030261, NM_200705, NM_201155, NM_213347, NM_001005935, NM_001020587, NM_001013515, NM_001044716, NM_131684, NM_001089469, NM_001099993, NM_200441, NM_200571, NM_199656, NM_001098745, NM_200103, NM_001089540, NM_001002407, NM_131667, NM_001077730, NM_001030227, NM_001013298, NM_001076607, NM_213196,

NM_001080168, NM_130953, NM_001002143, NM_001076612, NM_213448, NM_001044756, NM_001002655, NM_001103124, NM_001025539, NM_001012312, NM_200459, NM_131452, NM_001079967, NM_001002577, NM_213502, NM_183340, NM_001007766, NM_131499, NM_214733, NM_001007771, NM_001013526, NM_199875, NM_001045108, NM_198375, NM_001045177, NM_212578, NM_213493, NM_200452, NM_131041, NM_001030260, NM_001040250, NM_001080002, NM_153669, NM_001089551, NM_199672, NM_001003519, NM_001082863, NM_205558, NM_213077, NM_131744, NM_001040358, NM_001020713, NM_001014346, NM_200296, NM_001083817, NM_200418, NM_131007, NM_001025503, NM_194393, NM_001020765, NM_001030101, NM_205607, NM_001025298, NM_200149, NM_213530, NM_213126, NM_001013297, NM_214695, NM_001024388, NM_001018165, NM_200869, NM_200683, NM_001079657, NM_001007135, NM_001001947, NM_201000, NM_212936, NM_199959, NM_213508, NM_213391, NM_001003500, NM_001005580, NM_001013285, NM_001004601, NM_200671, NM_001007309, NM_131446, NM_212988, NM_001080750, NM_213435, NM_001004648, NM_173283, NM_001006074, NM_201035, NM_001098177, NM_001080013, NM_213357, NM_199744, NM_001007366, NM_213362, NM_198374, NM_001007371, NM_200177, NM_001002165, NM_001077799, NM_001013261, NM_001005933, NM_200429, NM_001003518, NM_001020585, NM_131491, NM_199272, NM_212565, NM_131682, NM_200625, NM_205562, NM_200816, NM_001039982, NM_001017861

miR-133 targets (in alignments of 5 fish genomes)

Confidence: 0.9

NM_001002527, NM_131193, NM_001030164, NM_199853, NM_001030238, NM_131037, NM_131180, NM_001002667, NM_130941, NM_200080, NM_001001940, NM_199567, NM_181495, NM_213184, NM_131729, NM_131893, NM_199538, NM_131452, NM_201285, NM_201466, NM_182967, NM_001077806, NM_173247, NM_001100086, NM_131686, NM_001007105, NM_199806, NM_001003570, NM_198358, NM_213122, NM_001079951, NM_199219, NM_001083551, NM_001012373, NM_214715, NM_194384, NM_131896, NM_213417, NM_001018165

Confidence: 0.8

NM_213417, NM_131595, NM_001002527, NM_001014369, NM_001006079, NM_201501, NM_001034976, NM_131193, NM_001077599, NM_199515, NM_213045, NM_001017651, NM_001030164, NM_199986, NM_001015041, NM_214805, NM_153650, NM_213184, NM_201137, NM_200757, NM_198358, NM_001082551, NM_001076569, NM_199853, NM_131452, NM_001030217, NM_001030238, NM_201143, NM_001033111, NM_131037, NM_131180, NM_131361, NM_001002667, NM_001012373, NM_001018165, NM_200079, NM_200626, NM_213306, NM_001077806, NM_198067, NM_131463, NM_001039834, NM_199806, NM_198366, NM_001100086, NM_001098730, NM_001004295, NM_200391, NM_199655, NM_130941, NM_200080, NM_213122, NM_001014355, NM_001001940, NM_199567, NM_205669, NM_200535, NM_181495, NM_212972, NM_131729, NM_131893, NM_199538, NM_201285, NM_201466, NM_200998, NM_212802, NM_182967, NM_001017886, NM_173247, NM_199532, NM_200874, NM_131686, NM_001007105, NM_001003570, NM_201335, NM_001079951, NM_199219, NM_001083551, NM_214715, NM_194384, NM_131896, NM_001102619

Confidence: 0.7

NM_213417, NM_131595, NM_001002527, NM_001014369, NM_001006079, NM_201501, NM_001034976, NM_131193, NM_001077599, NM_001017886, NM_199687, NM_199515, NM_213045, NM_001017651, NM_001030164, NM_199986, NM_200929, NM_001015041,

NM_214805, NM_153650, NM_213184, NM_199570, NM_201137, NM_200757, NM_198358, NM_001082551, NM_001076569, NM_199853, NM_131452, NM_001030217, NM_001030238, NM_201143, NM_001033111, NM_131037, NM_131180, NM_131361, NM_001002667, NM_001012373, NM_001018165, NM_200079, NM_200626, NM_213306, NM_001077806, NM_198067, NM_131463, NM_001039834, NM_199806, NM_198366, NM_001100086, NM_001020551, NM_001098730, NM_001004295, NM_200391, NM_199655, NM_130941, NM_200080, NM_213122, NM_001014355, NM_001001940, NM_199567, NM_205669, NM_194273, NM_200535, NM_181495, NM_212972, NM_131729, NM_131893, NM_199538, NM_201285, NM_201466, NM_001102619, NM_200998, NM_212802, NM_001003833, NM_182967, NM_173247, NM_199532, NM_200874, NM_131686, NM_001007105, NM_001003570, NM_201335, NM_001079951, NM_213097, NM_199219, NM_001083551, NM_214715, NM_194384, NM_131896

Confidence: 0.6

NM_001076569, NM_201143, NM_200391, NM_001075104, NM_001014369, NM_131664, NM_131452, NM_001018165, NM_200080, NM_199853, NM_131037, NM_131463, NM_200929, NM_001004295, NM_213417, NM_200757, NM_131361, NM_199687, NM_001002667, NM_199655, NM_001082551, NM_001030164, NM_001077144, NM_001017886, NM_001102619, NM_200626, NM_001100086, NM_194273, NM_213122, NM_199806, NM_131595, NM_201501, NM_198067, NM_199567, NM_131628, NM_200079, NM_200535, NM_214805, NM_001012373, NM_001039834, NM_001001940, NM_001033111, NM_131260, NM_131193, NM_213184, NM_201137, NM_213045, NM_153650, NM_001030238, NM_199986, NM_001017651, NM_130941, NM_199570, NM_213306, NM_131180, NM_001030217, NM_001015041, NM_198358, NM_001020551, NM_001077599, NM_001077806, NM_001098730, NM_198366, NM_001014355, NM_001034976, NM_001002527, NM_213003, NM_205669, NM_199515, NM_001006079, NM_199532, NM_201335, NM_212972, NM_199538, NM_199219, NM_001079951, NM_131893, NM_200441, NM_001003833, NM_131896, NM_001083551, NM_001003570, NM_182967, NM_001007105, NM_194384, NM_001079944, NM_214715, NM_212802, NM_200874, NM_201285, NM_200633, NM_131729, NM_213097, NM_200998, NM_131686, NM_181495, NM_201466, NM_173247

Confidence: 0.5

NM_199570, NM_001030238, NM_213122, NM_213045, NM_213306, NM_001034976, NM_198366, NM_001023580, NM_131260, NM_131628, NM_212876, NM_131180, NM_199806, NM_200080, NM_131037, NM_001102619, NM_198358, NM_131361, NM_001017651, NM_001039834, NM_001045092, NM_001077806, NM_001030164, NM_001001940, NM_153650, NM_200626, NM_001018165, NM_199893, NM_130958, NM_213184, NM_001014369, NM_001006079, NM_194384, NM_199655, NM_001082551, NM_199687, NM_001075104, NM_200391, NM_001100086, NM_001002667, NM_001020714, NM_199853, NM_200079, NM_131595, NM_201137, NM_213003, NM_131193, NM_214805, NM_131099, NM_001077144, NM_001098730, NM_213417, NM_001033111, NM_200535, NM_201501, NM_205669, NM_001014355, NM_199986, NM_131371, NM_131664, NM_131463, NM_001012373, NM_199567, NM_130941, NM_001020551, NM_001030217, NM_001015041, NM_201143, NM_199515, NM_178437, NM_001076569, NM_001002527, NM_200929, NM_001077599, NM_001004295, NM_194273, NM_198067, NM_001017886, NM_200682, NM_001044927, NM_200757, NM_205609, NM_131452, NM_001017573, NM_199219, NM_001003570, NM_201335, NM_199538, NM_212802, NM_200874, NM_200998, NM_001007105, NM_212972, NM_199532, NM_001079951, NM_200633, NM_213437, NM_213097, NM_181495, NM_173247, NM_200441, NM_182967, NM_201285, NM_001083551, NM_201466, NM_001003833, NM_214715, NM_131686, NM_131729, NM_001079944, NM_199881, NM_131896, NM_131893

Confidence: 0.4

NM_199570, NM_001030238, NM_213122, NM_213045, NM_213306, NM_001034976,
NM_198366, NM_001023580, NM_131260, NM_131628, NM_212876, NM_213071,
NM_131180, NM_199806, NM_200080, NM_131037, NM_001102619, NM_198358,
NM_131361, NM_001017651, NM_001039834, NM_001045092, NM_001077806,
NM_001030164, NM_001001940, NM_153650, NM_200626, NM_001018165, NM_199893,
NM_130958, NM_213184, NM_001014369, NM_001006079, NM_001020642, NM_194384,
NM_199655, NM_001082551, NM_199687, NM_001075104, NM_131859, NM_200391,
NM_001100086, NM_001002667, NM_001020714, NM_199853, NM_200079, NM_131595,
NM_201137, NM_213003, NM_131193, NM_214805, NM_131099, NM_001077144,
NM_213325, NM_001098730, NM_213417, NM_001033111, NM_200535, NM_201501,
NM_205669, NM_001014355, NM_199986, NM_131371, NM_131664, NM_131463,
NM_001012373, NM_199567, NM_130941, NM_001020551, NM_001030217, NM_001015041,
NM_201143, NM_199515, NM_178437, NM_001076569, NM_001002527, NM_200929,
NM_001077599, NM_001004295, NM_194273, NM_198067, NM_001017886, NM_200682,
NM_001044927, NM_001002094, NM_200757, NM_001008624, NM_205609, NM_131452,
NM_001017573, NM_199219, NM_001003570, NM_201335, NM_199538, NM_212802,
NM_200874, NM_200998, NM_001007105, NM_212972, NM_199532, NM_001079951,
NM_200633, NM_213437, NM_213097, NM_181495, NM_173247, NM_200441, NM_182967,
NM_201285, NM_001083551, NM_201466, NM_001003833, NM_214715, NM_131686,
NM_131729, NM_001079944, NM_199881, NM_131896, NM_131893

Confidence: 0.3

NM_200929, NM_213325, NM_001018165, NM_001030238, NM_001001940, NM_131595,
NM_001039834, NM_001002527, NM_131099, NM_200079, NM_130941, NM_200682,
NM_001020642, NM_001100086, NM_001020714, NM_001044927, NM_131361, NM_200391,
NM_001008624, NM_001017651, NM_001002667, NM_001017886, NM_001014369,
NM_200535, NM_205609, NM_001012373, NM_178437, NM_199986, NM_213003,
NM_001033111, NM_131371, NM_198366, NM_199806, NM_194384, NM_001002094,
NM_001014355, NM_001098730, NM_130958, NM_213071, NM_213184, NM_131628,
NM_131452, NM_131193, NM_201143, NM_213045, NM_213417, NM_199515, NM_205669,
NM_001030217, NM_198358, NM_199687, NM_001077806, NM_001015041, NM_200626,
NM_131037, NM_198067, NM_001082551, NM_199655, NM_001017573, NM_131664,
NM_201501, NM_200757, NM_001076569, NM_001102619, NM_131260, NM_001030164,
NM_194273, NM_199893, NM_001075104, NM_001023580, NM_001004295, NM_001077144,
NM_213306, NM_131180, NM_199567, NM_001045092, NM_131463, NM_214805,
NM_001020551, NM_001077599, NM_131859, NM_001006079, NM_200080, NM_001034976,
NM_212876, NM_199570, NM_201137, NM_213122, NM_199853, NM_153650, NM_131896,
NM_173247, NM_001083551, NM_199881, NM_201335, NM_001003833, NM_200998,
NM_200633, NM_201466, NM_199538, NM_131686, NM_199532, NM_182967,
NM_001007105, NM_181495, NM_200441, NM_213437, NM_212972, NM_001003570,
NM_001079951, NM_131893, NM_214715, NM_213097, NM_212802, NM_001079944,
NM_200874, NM_201285, NM_131729, NM_199219

Confidence: 0.2

NM_200929, NM_213325, NM_001018165, NM_001030238, NM_001001940, NM_131595,
NM_001039834, NM_001002527, NM_131099, NM_200079, NM_130941, NM_200682,
NM_001020642, NM_001100086, NM_001020714, NM_001044927, NM_131361, NM_200391,
NM_001008624, NM_001017651, NM_001002667, NM_001017886, NM_001014369,
NM_200535, NM_205609, NM_001012373, NM_178437, NM_199986, NM_213003,
NM_001033111, NM_131371, NM_198366, NM_199806, NM_194384, NM_001002094,
NM_001014355, NM_001098730, NM_130958, NM_213071, NM_213184, NM_131628,
NM_131452, NM_131193, NM_201143, NM_213045, NM_213417, NM_199515, NM_205669,

NM_001030217, NM_198358, NM_199687, NM_001077806, NM_001015041, NM_200626, NM_131037, NM_198067, NM_001082551, NM_199655, NM_001017573, NM_131664, NM_201501, NM_200757, NM_001076569, NM_001102619, NM_131260, NM_001030164, NM_194273, NM_199893, NM_001075104, NM_001023580, NM_001004295, NM_001077144, NM_213306, NM_131180, NM_199567, NM_001045092, NM_131463, NM_214805, NM_001020551, NM_001077599, NM_131859, NM_001006079, NM_200080, NM_001034976, NM_212876, NM_199570, NM_201137, NM_213122, NM_199853, NM_153650, NM_131896, NM_173247, NM_001083551, NM_199881, NM_201335, NM_001003833, NM_200998, NM_200633, NM_201466, NM_199538, NM_131686, NM_199532, NM_182967, NM_001007105, NM_181495, NM_200441, NM_213437, NM_212972, NM_001003570, NM_001079951, NM_131893, NM_214715, NM_213097, NM_212802, NM_001079944, NM_200874, NM_201285, NM_131729, NM_199219

Confidence: 0.1

NM_001077599, NM_199567, NM_001098730, NM_001006079, NM_130958, NM_131193, NM_131595, NM_001002667, NM_001077806, NM_199655, NM_213417, NM_001018165, NM_200391, NM_199986, NM_001015041, NM_001002527, NM_199515, NM_200079, NM_194384, NM_213306, NM_001014355, NM_199893, NM_199853, NM_200757, NM_001002094, NM_200682, NM_001017651, NM_213003, NM_199687, NM_199806, NM_001039834, NM_194273, NM_001100086, NM_130941, NM_001030217, NM_205669, NM_131664, NM_201137, NM_001076569, NM_001033111, NM_212876, NM_001077144, NM_001030164, NM_001020551, NM_001004295, NM_001017573, NM_131180, NM_131628, NM_131361, NM_001020714, NM_200535, NM_213071, NM_001034976, NM_201501, NM_001012373, NM_001014369, NM_200080, NM_001082551, NM_153650, NM_201143, NM_001017886, NM_214805, NM_001030238, NM_198366, NM_178437, NM_131859, NM_131371, NM_131037, NM_131099, NM_001075104, NM_001008624, NM_200929, NM_198067, NM_001020642, NM_213045, NM_001102619, NM_199570, NM_131260, NM_131452, NM_001045092, NM_131463, NM_200626, NM_205609, NM_213122, NM_213184, NM_198358, NM_001023580, NM_001001940, NM_213325, NM_001044927, NM_001083551, NM_131893, NM_131729, NM_212972, NM_200874, NM_131896, NM_199532, NM_131686, NM_199881, NM_001003833, NM_001007105, NM_001003570, NM_213437, NM_201335, NM_213097, NM_212802, NM_182967, NM_001079951, NM_181495, NM_199219, NM_001079944, NM_200998, NM_200441, NM_200633, NM_201285, NM_201466, NM_214715, NM_199538, NM_173247

Confidence: 0.0

NM_200116, NM_001003455, NM_001082985, NM_001004561, NM_001017724, NM_182866, NM_001003521, NM_001083557, NM_001080636, NM_200971, NM_001076615, NM_201009, NM_181496, NM_001002342, NM_200633, NM_200229, NM_001003629, NM_001020696, NM_214780, NM_001017651, NM_001002073, NM_001017712, NM_201335, NM_199853, NM_001089583, NM_131604, NM_205609, NM_131859, NM_001001944, NM_130949, NM_213003, NM_199515, NM_199584, NM_001004596, NM_001082831, NM_001017573, NM_001037805, NM_200161, NM_200408, NM_131595, NM_001024373, NM_199567, NM_001077756, NM_001003478, NM_198067, NM_001077296, NM_001004584, NM_200205, NM_001089549, NM_001003544, NM_001044865, NM_001002044, NM_212801, NM_001017813, NM_199893, NM_199954, NM_173221, NM_001077279, NM_205593, NM_001077154, NM_212723, NM_001003596, NM_213234, NM_001020716, NM_131037, NM_200323, NM_001081748, NM_131502, NM_200578, NM_001002348, NM_199942, NM_199538, NM_001077796, NM_131823, NM_001007351, NM_001025450, NM_199673, NM_001020643, NM_213408, NM_001045161, NM_001040354, NM_001034976, NM_001001825, NM_001007329, NM_001080635, NM_200441, NM_214769, NM_001004538, NM_131875, NM_200757, NM_001002527, NM_001005982, NM_001002596, NM_205630, NM_001030217, NM_001002718, NM_201143, NM_001020570, NM_201334, NM_153663,

NM_001039497, NM_213071, NM_001044746, NM_001045847, NM_213318, NM_212876, NM_213448, NM_213262, NM_001020744, NM_001007053, NM_131400, NM_001080606, NM_001014308, NM_201577, NM_199566, NM_001004578, NM_131790, NM_213184, NM_001002628, NM_130941, NM_213306, NM_199818, NM_001003543, NM_199887, NM_131452, NM_213250, NM_213311, NM_201499, NM_001045311, NM_001002173, NM_199549, NM_201036, NM_213228, NM_201501, NM_001100436, NM_201166, NM_001023580, NM_001083841, NM_131435, NM_001045172, NM_001082931, NM_199806, NM_001002095, NM_200386, NM_001077599, NM_001008654, NM_001017399, NM_213424, NM_200391, NM_001017800, NM_001100948, NM_201492, NM_001007406, NM_212583, NM_001099977, NM_182859, NM_001008576, NM_199797, NM_001002729, NM_001044774, NM_213160, NM_001020642, NM_198358, NM_001008581, NM_001045351, NM_205558, NM_213077, NM_200626, NM_001002465, NM_131874, NM_201137, NM_199655, NM_207050, NM_201081, NM_001017705, NM_001089390, NM_001004672, NM_001099228, NM_201059, NM_131671, NM_200614, NM_001098387, NM_201189, NM_214756, NM_001002049, NM_001045846, NM_001004594, NM_001030268, NM_001002054, NM_131463, NM_001030204, NM_213447, NM_001040324, NM_001077558, NM_200810, NM_200220, NM_212880, NM_153650, NM_130935, NM_001004577, NM_212733, NM_214805, NM_131260, NM_199570, NM_130940, NM_001011712, NM_001013263, NM_001003988, NM_173283, NM_001037118, NM_131304, NM_001080579, NM_001020714, NM_199805, NM_201295, NM_001002094, NM_001089535, NM_131099, NM_201170, NM_001002155, NM_200911, NM_198374, NM_001003851, NM_001040685, NM_212582, NM_001045279, NM_199666, NM_001017655, NM_001002667, NM_001004553, NM_201092, NM_001003513, NM_001024073, NM_200182, NM_131361, NM_001005779, NM_201214, NM_131018, NM_001100149, NM_001013298, NM_001024389, NM_001040352, NM_001076607, NM_001008641, NM_199923, NM_205557, NM_130958, NM_001045076, NM_001018678, NM_200816, NM_199654, NM_001005390, NM_001003565, NM_199715, NM_212886, NM_213397, NM_198805, NM_001045203, NM_001008624, NM_200890, NM_153661, NM_200361, NM_001025539, NM_001080031, NM_131856, NM_201058, NM_001017900, NM_001013352, NM_001004649, NM_200682, NM_200278, NM_214816, NM_201063, NM_200929, NM_199767, NM_001020551, NM_001008607, NM_001017886, NM_001077557, NM_001008612, NM_183345, NM_001076708, NM_199963, NM_200535, NM_200410, NM_131193, NM_001077288, NM_001045177, NM_001007433, NM_200080, NM_001040306, NM_001076569, NM_001004113, NM_001077151, NM_001030238, NM_213417, NM_200905, NM_001045170, NM_182874, NM_001002154, NM_131563, NM_131159, NM_212911, NM_001004295, NM_001080644, NM_152965, NM_001005991, NM_001045092, NM_212703, NM_001102619, NM_001045339, NM_001025168, NM_001040346, NM_001082981, NM_001007199, NM_200367, NM_001018165, NM_194273, NM_182862, NM_213474, NM_199986, NM_001001947, NM_199861, NM_178307, NM_001003833, NM_201473, NM_131277, NM_199991, NM_199587, NM_178437, NM_001003498, NM_200879, NM_001076741, NM_131872, NM_001089383, NM_001045202, NM_001015041, NM_001076658, NM_001100011, NM_131664, NM_001002130, NM_205669, NM_212677, NM_131794, NM_001013290, NM_201461, NM_131855, NM_001001940, NM_213124, NM_001002451, NM_201123, NM_001045254, NM_001045315, NM_001099422, NM_001077301, NM_001002113, NM_001014369, NM_199962, NM_001002304, NM_130928, NM_200789, NM_001025526, NM_001020472, NM_199749, NM_001033111, NM_212861, NM_001002630, NM_001081631, NM_001080001, NM_001007293, NM_001100957, NM_001044778, NM_131180, NM_001045164, NM_001003523, NM_001002148, NM_131371, NM_001017601, NM_131432, NM_201293, NM_199213, NM_001001833, NM_194406, NM_152964, NM_001030159, NM_001017709, NM_212641, NM_001045277, NM_001030164, NM_201090, NM_001077579, NM_001100086, NM_200302, NM_001020700, NM_001100022, NM_001012386, NM_200097, NM_205560, NM_001099428, NM_001003433, NM_199777, NM_001034174, NM_213326, NM_001007061, NM_178297, NM_001012499, NM_212950, NM_213461, NM_214687, NM_001014321, NM_213192, NM_212803, NM_001030265,

NM_001099421, NM_200871, NM_213505, NM_199831, NM_001002181, NM_200658, NM_001040047, NM_001014304, NM_213045, NM_001002497, NM_001017607, NM_199687, NM_213640, NM_001020471, NM_001002624, NM_199753, NM_199814, NM_001039924, NM_001044985, NM_213371, NM_213097, NM_213158, NM_001077144, NM_001014361, NM_214724, NM_001042766, NM_001045349, NM_001089466, NM_213293, NM_001008584, NM_001040356, NM_001044968, NM_212439, NM_199927, NM_001077465, NM_198366, NM_001040361, NM_001080052, NM_001002872, NM_001099248, NM_130967, NM_200634, NM_205571, NM_001045207, NM_200299, NM_001017708, NM_213276, NM_001077791, NM_001045212, NM_001039834, NM_201336, NM_201150, NM_001002135, NM_213403, NM_001045472, NM_001075104, NM_213004, NM_201067, NM_001014332, NM_001098730, NM_001001950, NM_001006079, NM_213325, NM_001008616, NM_001030090, NM_001018146, NM_001039171, NM_001083069, NM_200353, NM_001044944, NM_001029957, NM_001020751, NM_194384, NM_001002439, NM_200079, NM_001020477, NM_001012373, NM_001007376, NM_200015, NM_198068, NM_001079704, NM_201584, NM_001007312, NM_214747, NM_213122, NM_214691, NM_001006067, NM_212680, NM_001002635, NM_001044927, NM_001020734, NM_001077549, NM_200527, NM_001017883, NM_001082551, NM_001089560, NM_001077806, NM_001002371, NM_130995, NM_200258, NM_201043, NM_130931, NM_001089477, NM_001020717, NM_001030247, NM_001044793, NM_001002623, NM_131628, NM_131697, NM_213431, NM_001077728, NM_001076757, NM_131104, NM_001099259, NM_001014355, NM_001002354, NM_131627, NM_199881, NM_001013490, NM_201285, NM_182865, NM_181495, NM_212572, NM_205552, NM_213257, NM_001079951, NM_131594, NM_001002735, NM_001017853, NM_194370, NM_200256, NM_199880, NM_001020739, NM_131362, NM_001001402, NM_201007, NM_198806, NM_200874, NM_001076564, NM_001020512, NM_001003514, NM_001077778, NM_001002470, NM_199614, NM_001076726, NM_001082824, NM_131630, NM_214715, NM_001045447, NM_198357, NM_200417, NM_213125, NM_001079944, NM_200998, NM_201029, NM_198911, NM_131896, NM_205651, NM_001003570, NM_213018, NM_001077302, NM_001098391, NM_001003744, NM_001007051, NM_001044350, NM_001007428, NM_203420, NM_001079960, NM_200017, NM_200208, NM_001077342, NM_214815, NM_200152, NM_001007338, NM_131838, NM_001045148, NM_001004547, NM_001039836, NM_001004599, NM_001002524, NM_200826, NM_001003998, NM_173247, NM_201068, NM_201129, NM_001040244, NM_200814, NM_001089550, NM_131325, NM_001017861, NM_199219, NM_194417, NM_200920, NM_213219, NM_205705, NM_201032, NM_001002063, NM_001002193, NM_131686, NM_131348, NM_213146, NM_207053, NM_001007105, NM_001040321, NM_201466, NM_212562, NM_001040304, NM_001013316, NM_182968, NM_213330, NM_205672, NM_001080047, NM_212802, NM_200336, NM_001002338, NM_212932, NM_001017647, NM_001002473, NM_001083551, NM_001005967, NM_131298, NM_001004533, NM_131893, NM_131494, NM_213478, NM_212972, NM_131807, NM_205565, NM_199532, NM_199662, NM_001003741, NM_131729, NM_001098180, NM_001012491, NM_182967, NM_199902, NM_001077733, NM_144763, NM_213437, NM_001004015

miR-206 targets (in alignments of 5 fish genomes)

Confidence: 0.9

NM_152974, NM_201295, NM_001003598, NM_001080583, NM_001003839, NM_201466, NM_001102672, NM_131336, NM_199212, NM_001080002, NM_199562, NM_001076652, NM_199697, NM_178303, NM_194374, NM_001001815, NM_213144, NM_212609, NM_213019, NM_199779, NM_199611, NM_131025, NM_001045105, NM_194376, NM_200104, NM_201186, NM_213028, NM_199679, NM_201322, NM_205601,

NM_001098730, NM_131031, NM_001004569, NM_131435, NM_001003470, NM_199996, NM_213463, NM_214803, NM_131302, NM_198978, NM_214736, NM_200082, NM_001077805, NM_001080044, NM_213351, NM_001001825, NM_001007159, NM_181601, NM_131220, NM_001089409, NM_131736, NM_214770, NM_001005582, NM_213223, NM_001003738, NM_131116, NM_001080029, NM_001080033, NM_001001818, NM_131714, NM_199649, NM_131563, NM_213158, NM_001001592, NM_001007767, NM_198210, NM_001033595, NM_001077767, NM_212758, NM_001044855, NM_001100001, NM_213185, NM_131595, NM_200927, NM_199833, NM_212991, NM_131184, NM_212933, NM_213641

Confidence: 0.8

NM_001081629, NM_152974, NM_201295, NM_001040394, NM_213091, NM_001003598, NM_213172, NM_001080583, NM_001003839, NM_201466, NM_001002181, NM_001102672, NM_131714, NM_001025502, NM_131336, NM_213158, NM_199212, NM_001080002, NM_199562, NM_001007159, NM_001076652, NM_199697, NM_178303, NM_194374, NM_001043321, NM_001077391, NM_001001815, NM_001098193, NM_213144, NM_001020608, NM_001079973, NM_131037, NM_212857, NM_001039992, NM_213019, NM_199779, NM_131340, NM_199611, NM_001013523, NM_131025, NM_001045105, NM_194376, NM_200104, NM_201186, NM_213028, NM_001082861, NM_001020702, NM_199679, NM_201322, NM_131430, NM_001098730, NM_001003587, NM_212603, NM_131031, NM_131435, NM_001003470, NM_199996, NM_213463, NM_201345, NM_214803, NM_198978, NM_214736, NM_001008631, NM_200082, NM_001034976, NM_213481, NM_198070, NM_213351, NM_001045071, NM_001001825, NM_001002668, NM_199675, NM_181601, NM_131220, NM_001017724, NM_001089409, NM_131736, NM_001014348, NM_214770, NM_213133, NM_200096, NM_207088, NM_001013493, NM_001005582, NM_213223, NM_001003738, NM_131116, NM_001017580, NM_001080029, NM_001080033, NM_001001818, NM_131617, NM_199649, NM_001077282, NM_131563, NM_001044858, NM_131433, NM_001001592, NM_001045310, NM_001007767, NM_198210, NM_001033595, NM_200723, NM_001077767, NM_212758, NM_001044855, NM_001100001, NM_199537, NM_200185, NM_212880, NM_001040379, NM_213185, NM_131595, NM_200927, NM_199833, NM_212991, NM_131184, NM_212933, NM_213641, NM_001077253

Confidence: 0.7

NM_001081629, NM_152974, NM_201295, NM_001040394, NM_213091, NM_001003598, NM_213172, NM_001080583, NM_001003839, NM_201466, NM_001002181, NM_001102672, NM_131714, NM_001025502, NM_131336, NM_213158, NM_199212, NM_001080002, NM_199562, NM_001007159, NM_001076652, NM_199697, NM_178303, NM_194374, NM_001043321, NM_001077391, NM_001001815, NM_001098193, NM_213144, NM_001020608, NM_201576, NM_212609, NM_181439, NM_001079973, NM_131037, NM_212857, NM_001039992, NM_199716, NM_213019, NM_199779, NM_131340, NM_199611, NM_001013523, NM_131025, NM_001045105, NM_130981, NM_194376, NM_200104, NM_201186, NM_213028, NM_001082861, NM_001020702, NM_199679, NM_213352, NM_001045362, NM_201322, NM_205601, NM_131430, NM_001098730, NM_001003587, NM_200185, NM_212603, NM_131031, NM_001004569, NM_131435, NM_212893, NM_212717, NM_001003470, NM_199996, NM_213463, NM_001045158, NM_001005955, NM_001005980, NM_213085, NM_001002380, NM_201345, NM_214803, NM_131302, NM_198978, NM_214736, NM_001008631, NM_200082, NM_001034976, NM_001077805, NM_213641, NM_213481, NM_001080044, NM_198070, NM_213351, NM_001045071, NM_001001825, NM_001040362, NM_001002668, NM_199675, NM_001007281, NM_181601, NM_001083108, NM_199823, NM_131220, NM_001017724, NM_001089409, NM_131736, NM_001014348, NM_214770, NM_213133, NM_200096, NM_207088, NM_001013493, NM_001005582, NM_213223, NM_001003738, NM_131116, NM_001017580, NM_001080029, NM_001080033, NM_001001818, NM_131617, NM_131500, NM_199649, NM_001077282, NM_131563, NM_001044858, NM_001089435, NM_131433,

NM_001001592, NM_001045310, NM_001007767, NM_198210, NM_001033595, NM_200723, NM_001077767, NM_212758, NM_001044855, NM_001100001, NM_199537, NM_212880, NM_001040379, NM_200278, NM_213185, NM_131595, NM_213375, NM_200927, NM_199833, NM_212991, NM_131184, NM_212933, NM_001077253

Confidence: 0.6

NM_199562, NM_213158, NM_201295, NM_152974, NM_001002181, NM_001025502, NM_001007159, NM_001102672, NM_001081629, NM_001003598, NM_199697, NM_213091, NM_199212, NM_213172, NM_001080583, NM_001040394, NM_201466, NM_001080002, NM_001003839, NM_131714, NM_001076652, NM_131336, NM_001001815, NM_001045362, NM_131220, NM_001002380, NM_213463, NM_213144, NM_001045260, NM_131435, NM_001017724, NM_001077805, NM_001002668, NM_001077391, NM_213085, NM_205601, NM_201576, NM_181601, NM_194376, NM_212857, NM_001043321, NM_001003470, NM_001039992, NM_200104, NM_131025, NM_001080044, NM_194384, NM_213019, NM_131773, NM_199675, NM_130981, NM_198070, NM_214803, NM_200082, NM_214736, NM_001005955, NM_001015068, NM_001020608, NM_213351, NM_199716, NM_199823, NM_199611, NM_001098193, NM_131430, NM_212562, NM_001082861, NM_213641, NM_001040362, NM_201322, NM_001079973, NM_001098730, NM_001013523, NM_001034976, NM_212603, NM_194374, NM_198978, NM_131302, NM_212609, NM_001020702, NM_200185, NM_131031, NM_001089409, NM_001045071, NM_181439, NM_178303, NM_199679, NM_001003587, NM_131037, NM_213028, NM_001008631, NM_001004569, NM_213352, NM_001007281, NM_001001825, NM_001045158, NM_001044319, NM_201186, NM_212893, NM_001005980, NM_131340, NM_213481, NM_212717, NM_199779, NM_212827, NM_131882, NM_199996, NM_199677, NM_201058, NM_001083108, NM_001045105, NM_201345, NM_199833, NM_200278, NM_212991, NM_001001818, NM_001077767, NM_213375, NM_214770, NM_131736, NM_001005582, NM_198210, NM_001080029, NM_001001592, NM_212933, NM_001013493, NM_001089435, NM_199649, NM_131500, NM_131433, NM_200096, NM_207088, NM_213185, NM_001045310, NM_001040379, NM_213223, NM_001033595, NM_001007767, NM_001077282, NM_001003738, NM_199537, NM_001077253, NM_131184, NM_001044855, NM_001044858, NM_212880, NM_001017580, NM_131617, NM_198338, NM_131595, NM_001014348, NM_131563, NM_001045472, NM_213133, NM_200927, NM_212758, NM_001080033, NM_001098485, NM_200723, NM_001100001, NM_131116

Confidence: 0.5

NM_001080002, NM_001002181, NM_199697, NM_001080583, NM_213091, NM_199562, NM_201466, NM_001003598, NM_131714, NM_213158, NM_001003839, NM_213172, NM_001081629, NM_199212, NM_001102672, NM_152974, NM_001040394, NM_131336, NM_001025502, NM_001007159, NM_201295, NM_001076652, NM_213352, NM_001083108, NM_131025, NM_001098730, NM_198070, NM_201576, NM_001077391, NM_199823, NM_199996, NM_131037, NM_001002380, NM_001007281, NM_212857, NM_198978, NM_001013523, NM_201186, NM_001003470, NM_131220, NM_001080044, NM_181601, NM_001002668, NM_131031, NM_001015068, NM_001040362, NM_199611, NM_001045105, NM_199675, NM_131430, NM_214736, NM_205601, NM_001045260, NM_001001815, NM_181439, NM_001017724, NM_001077805, NM_194384, NM_001044319, NM_199779, NM_001034976, NM_001045071, NM_212717, NM_213144, NM_130981, NM_212562, NM_200185, NM_200104, NM_201058, NM_001045158, NM_194376, NM_199679, NM_131882, NM_213463, NM_131773, NM_001003587, NM_001004569, NM_001039992, NM_001098193, NM_201345, NM_213351, NM_199716, NM_131302, NM_001043321, NM_001089409, NM_212893, NM_200082, NM_212827, NM_213641, NM_212609, NM_001079973, NM_001005980, NM_213085, NM_213019, NM_201322, NM_001045362, NM_001001825, NM_001008631, NM_001020702, NM_001082861, NM_214803, NM_131435, NM_001020608, NM_212603, NM_213481, NM_194374, NM_178303, NM_131340,

NM_199677, NM_001005955, NM_213028, NM_214770, NM_131184, NM_001013493, NM_001077767, NM_200096, NM_131563, NM_131595, NM_001077253, NM_001100001, NM_199833, NM_001077282, NM_213185, NM_001080029, NM_212880, NM_001089435, NM_001017580, NM_213133, NM_131736, NM_001045310, NM_131116, NM_001003433, NM_001040379, NM_131500, NM_001001818, NM_200278, NM_001005582, NM_213375, NM_212758, NM_001045472, NM_200441, NM_001044858, NM_001030251, NM_198210, NM_001044855, NM_001014348, NM_001004295, NM_001001592, NM_213223, NM_207088, NM_200927, NM_001007767, NM_212933, NM_001003738, NM_199649, NM_001033595, NM_200723, NM_001098485, NM_198338, NM_001080033, NM_131433, NM_199537, NM_131617, NM_212991

Confidence: 0.4

NM_001080002, NM_001002181, NM_199697, NM_001080583, NM_213091, NM_199562, NM_201466, NM_001003598, NM_131714, NM_213158, NM_001003839, NM_213172, NM_001081629, NM_199212, NM_001102672, NM_152974, NM_001040394, NM_131336, NM_001025502, NM_001007159, NM_201295, NM_001076652, NM_213352, NM_001083108, NM_131025, NM_001098730, NM_198070, NM_201576, NM_001077391, NM_199823, NM_199996, NM_131037, NM_001002380, NM_001007281, NM_212857, NM_198978, NM_001013523, NM_201186, NM_001003470, NM_131220, NM_001080044, NM_181601, NM_001002668, NM_131031, NM_001015068, NM_001040362, NM_199611, NM_001045105, NM_199675, NM_131430, NM_214736, NM_205601, NM_001045260, NM_001001815, NM_181439, NM_001017724, NM_001077805, NM_194384, NM_001044319, NM_199779, NM_001034976, NM_001045071, NM_212717, NM_213144, NM_130981, NM_212562, NM_200185, NM_200104, NM_201058, NM_001045158, NM_194376, NM_199679, NM_131882, NM_213463, NM_131773, NM_001003587, NM_001004569, NM_001039992, NM_001098193, NM_201345, NM_213351, NM_199716, NM_131302, NM_001043321, NM_001089409, NM_212893, NM_200082, NM_212827, NM_213641, NM_212609, NM_001079973, NM_001005980, NM_213085, NM_213019, NM_201322, NM_001045362, NM_001001825, NM_001008631, NM_001020702, NM_001082861, NM_214803, NM_131435, NM_001020608, NM_212603, NM_213481, NM_194374, NM_178303, NM_131340, NM_199677, NM_001005955, NM_213028, NM_214770, NM_131184, NM_001013493, NM_001077767, NM_200096, NM_131563, NM_131595, NM_001077253, NM_001100001, NM_199833, NM_001077282, NM_213185, NM_001080029, NM_212880, NM_001089435, NM_001017580, NM_213133, NM_131736, NM_001045310, NM_131116, NM_001003433, NM_001040379, NM_131500, NM_001001818, NM_200278, NM_001005582, NM_213375, NM_212758, NM_001045472, NM_200441, NM_001044858, NM_001030251, NM_198210, NM_001044855, NM_001014348, NM_001004295, NM_001001592, NM_213223, NM_207088, NM_200927, NM_001007767, NM_212933, NM_001003738, NM_199649, NM_001033595, NM_200723, NM_001098485, NM_198338, NM_001080033, NM_131433, NM_199537, NM_131617, NM_212991

Confidence: 0.3

NM_201466, NM_152974, NM_131336, NM_001007159, NM_001040394, NM_213158, NM_001003839, NM_001003598, NM_001080002, NM_001076652, NM_199697, NM_001102672, NM_213091, NM_213172, NM_131714, NM_001081629, NM_001025502, NM_001080583, NM_199562, NM_199212, NM_001002181, NM_201295, NM_001077391, NM_212717, NM_001083108, NM_213463, NM_198978, NM_201322, NM_001007281, NM_001015068, NM_131220, NM_001017724, NM_181439, NM_130981, NM_213481, NM_199779, NM_212857, NM_200185, NM_131773, NM_213351, NM_199675, NM_001098193, NM_205601, NM_001045362, NM_131025, NM_178303, NM_201186, NM_001045071, NM_001020608, NM_001003470, NM_001045158, NM_131302, NM_212893, NM_001039992, NM_199611, NM_001079973, NM_213352, NM_201576, NM_001044319, NM_200082, NM_001077805, NM_200104, NM_001002668, NM_194374, NM_001098730,

NM_199716, NM_213085, NM_214736, NM_199823, NM_199677, NM_001040362, NM_212827, NM_131882, NM_001013523, NM_001045260, NM_001002380, NM_212562, NM_194384, NM_001001815, NM_001005980, NM_201058, NM_001020702, NM_213019, NM_001043321, NM_214803, NM_194376, NM_131435, NM_199996, NM_213028, NM_001089409, NM_001080044, NM_131037, NM_001004569, NM_001082861, NM_131031, NM_131340, NM_212609, NM_001045105, NM_213144, NM_001005955, NM_199679, NM_001001825, NM_212603, NM_198070, NM_181601, NM_001034976, NM_131430, NM_001003587, NM_201345, NM_001008631, NM_213641, NM_213185, NM_001001592, NM_001080029, NM_001044855, NM_131736, NM_200927, NM_001007767, NM_001098485, NM_001003433, NM_212991, NM_001017580, NM_001030251, NM_001080033, NM_001001818, NM_212933, NM_001077253, NM_200096, NM_199649, NM_213375, NM_131595, NM_131617, NM_198338, NM_198210, NM_001044858, NM_212880, NM_001013493, NM_214770, NM_131563, NM_001005582, NM_199537, NM_001089435, NM_001003738, NM_001045472, NM_131433, NM_001100001, NM_001004295, NM_213133, NM_131116, NM_207088, NM_001040379, NM_001045310, NM_213223, NM_200723, NM_001077282, NM_001033595, NM_001077767, NM_131184, NM_131500, NM_212758, NM_200441, NM_199833, NM_001014348, NM_200278

Confidence: 0.2

NM_201466, NM_152974, NM_131336, NM_001007159, NM_001040394, NM_213158, NM_001003839, NM_001003598, NM_001080002, NM_001076652, NM_199697, NM_001102672, NM_213091, NM_213172, NM_131714, NM_001081629, NM_001025502, NM_001080583, NM_199562, NM_199212, NM_001002181, NM_201295, NM_001077391, NM_212717, NM_001083108, NM_213463, NM_198978, NM_201322, NM_001007281, NM_001015068, NM_131220, NM_001017724, NM_181439, NM_130981, NM_213481, NM_199779, NM_212857, NM_200185, NM_131773, NM_213351, NM_199675, NM_001098193, NM_205601, NM_001045362, NM_131025, NM_178303, NM_201186, NM_001045071, NM_001020608, NM_001003470, NM_001045158, NM_131302, NM_212893, NM_001039992, NM_199611, NM_001079973, NM_213352, NM_201576, NM_001044319, NM_200082, NM_001077805, NM_200104, NM_001002668, NM_194374, NM_001098730, NM_199716, NM_213085, NM_214736, NM_199823, NM_199677, NM_001040362, NM_212827, NM_131882, NM_001013523, NM_001045260, NM_001002380, NM_212562, NM_194384, NM_001001815, NM_001005980, NM_201058, NM_001020702, NM_213019, NM_001043321, NM_214803, NM_194376, NM_131435, NM_199996, NM_213028, NM_001089409, NM_001080044, NM_131037, NM_001004569, NM_001082861, NM_131031, NM_131340, NM_212609, NM_001045105, NM_213144, NM_001005955, NM_199679, NM_001001825, NM_212603, NM_198070, NM_181601, NM_001034976, NM_131430, NM_001003587, NM_201345, NM_001008631, NM_213641, NM_213185, NM_001001592, NM_001080029, NM_001044855, NM_131736, NM_200927, NM_001007767, NM_001098485, NM_001003433, NM_212991, NM_001017580, NM_001030251, NM_001080033, NM_001001818, NM_212933, NM_001077253, NM_200096, NM_199649, NM_213375, NM_131595, NM_131617, NM_198338, NM_198210, NM_001044858, NM_212880, NM_001013493, NM_214770, NM_131563, NM_001005582, NM_199537, NM_001089435, NM_001003738, NM_001045472, NM_131433, NM_001100001, NM_001004295, NM_213133, NM_131116, NM_207088, NM_001040379, NM_001045310, NM_213223, NM_200723, NM_001077282, NM_001033595, NM_001077767, NM_131184, NM_131500, NM_212758, NM_200441, NM_199833, NM_001014348, NM_200278

Confidence: 0.1

NM_001080002, NM_199697, NM_131336, NM_001080583, NM_001007159, NM_001025502, NM_001003839, NM_152974, NM_201466, NM_001003598, NM_213091, NM_131714, NM_001002181, NM_001076652, NM_199562, NM_213172, NM_201295, NM_213158, NM_001040394, NM_199212, NM_001102672, NM_001081629, NM_199716, NM_212857,

NM_131773, NM_001017724, NM_001020702, NM_131037, NM_205601, NM_001008631, NM_001045362, NM_131302, NM_201058, NM_213085, NM_001002668, NM_131430, NM_201345, NM_131220, NM_001045105, NM_201186, NM_212717, NM_001013523, NM_213144, NM_213641, NM_131025, NM_194374, NM_212827, NM_199611, NM_001098730, NM_001003470, NM_001079973, NM_178303, NM_001015068, NM_001044319, NM_201322, NM_131882, NM_200082, NM_199677, NM_214803, NM_001083108, NM_201576, NM_001077391, NM_181601, NM_131031, NM_213019, NM_001039992, NM_001001815, NM_213481, NM_194384, NM_131340, NM_200185, NM_213463, NM_214736, NM_181439, NM_212609, NM_001005980, NM_001077805, NM_001043321, NM_130981, NM_001045260, NM_213352, NM_001045158, NM_199996, NM_001005955, NM_001004569, NM_001082861, NM_001001825, NM_001020608, NM_199779, NM_194376, NM_001089409, NM_199823, NM_200104, NM_001003587, NM_212562, NM_199675, NM_001034976, NM_001040362, NM_001098193, NM_001002380, NM_213351, NM_199679, NM_001080044, NM_198978, NM_212893, NM_213028, NM_001045071, NM_198070, NM_131435, NM_001007281, NM_212603, NM_213223, NM_207088, NM_001089435, NM_001040379, NM_212758, NM_214770, NM_001001592, NM_213185, NM_001044855, NM_001014348, NM_131563, NM_001005582, NM_199833, NM_001003433, NM_200441, NM_001017580, NM_001098485, NM_001077767, NM_001004295, NM_199649, NM_001001818, NM_213133, NM_198210, NM_212991, NM_131500, NM_001100001, NM_001080033, NM_212933, NM_001044858, NM_131595, NM_131736, NM_212880, NM_001013493, NM_131433, NM_001030251, NM_213375, NM_200278, NM_001077282, NM_001003738, NM_001077253, NM_199537, NM_200927, NM_001045472, NM_001033595, NM_131116, NM_001080029, NM_200096, NM_001045310, NM_198338, NM_200723, NM_131617, NM_001007767, NM_131184

Confidence: 0.0

NM_201466, NM_201471, NM_201067, NM_131336, NM_212878, NM_001089439, NM_213200, NM_207088, NM_214686, NM_001003738, NM_001098390, NM_001076646, NM_001040048, NM_001080988, NM_200723, NM_001007371, NM_182878, NM_001045367, NM_213556, NM_001039994, NM_001082796, NM_152974, NM_001013261, NM_200185, NM_001003839, NM_131430, NM_131807, NM_199596, NM_131408, NM_001025502, NM_130971, NM_001045277, NM_213133, NM_194378, NM_001006021, NM_198870, NM_001012499, NM_200139, NM_001020544, NM_199697, NM_205602, NM_200526, NM_001079970, NM_212596, NM_001002181, NM_001003598, NM_001098181, NM_001003473, NM_001039988, NM_131297, NM_001005996, NM_213031, NM_213352, NM_001089471, NM_001080047, NM_213205, NM_001045207, NM_201329, NM_201459, NM_201993, NM_205547, NM_213318, NM_212729, NM_001025536, NM_205601, NM_201053, NM_001003545, NM_131508, NM_212989, NM_200863, NM_001014303, NM_213172, NM_199620, NM_001017741, NM_001077733, NM_212899, NM_153669, NM_131609, NM_200964, NM_213013, NM_001076745, NM_199716, NM_200418, NM_131007, NM_001002389, NM_199577, NM_001007392, NM_201576, NM_001018150, NM_201113, NM_213499, NM_001045251, NM_201295, NM_131500, NM_001017870, NM_213093, NM_001002669, NM_213406, NM_001003520, NM_200625, NM_001083813, NM_198805, NM_001005583, NM_199720, NM_201058, NM_001080033, NM_001017628, NM_001089435, NM_001040394, NM_131714, NM_001102672, NM_001082877, NM_212857, NM_001081629, NM_201497, NM_194363, NM_001007296, NM_199677, NM_001098489, NM_200969, NM_131563, NM_001079950, NM_213023, NM_207055, NM_001100030, NM_201473, NM_001080044, NM_199587, NM_200034, NM_201326, NM_001002717, NM_213332, NM_001013348, NM_001020608, NM_001005964, NM_203460, NM_131505, NM_001004643, NM_001025455, NM_212778, NM_200838, NM_131302, NM_001080579, NM_001013520, NM_001089474, NM_205567, NM_001004296, NM_212636, NM_001098745, NM_213091, NM_212827, NM_001040347, NM_001020702, NM_001017660, NM_001003499, NM_001044310, NM_199708, NM_199777, NM_207089, NM_001024438, NM_001007445,

NM_001007320, NM_212933, NM_212789, NM_200788, NM_001077288, NM_001076652, NM_199562, NM_131629, NM_199939, NM_001007159, NM_199944, NM_001007289, NM_213158, NM_001080002, NM_205644, NM_213349, NM_212439, NM_131617, NM_201292, NM_199212, NM_001080583, NM_001004295, NM_200365, NM_001002385, NM_213447, NM_199959, NM_201507, NM_194376, NM_213452, NM_212603, NM_001045315, NM_001002642, NM_200541, NM_001045384, NM_131316, NM_214683, NM_001089562, NM_131850, NM_199570, NM_001014305, NM_198070, NM_001077157, NM_001083000, NM_001089354, NM_001002165, NM_001089420, NM_001083108, NM_200906, NM_212577, NM_001002608, NM_213019, NM_001100962, NM_001003587, NM_212704, NM_001006045, NM_001030181, NM_001002743, NM_001040362, NM_201214, NM_001044320, NM_205701, NM_001007281, NM_001045208, NM_001083821, NM_001045091, NM_001002665, NM_001013570, NM_001080626, NM_212886, NM_199779, NM_213328, NM_200040, NM_001001946, NM_212609, NM_213463, NM_001045010, NM_214689, NM_200087, NM_201188, NM_213064, NM_201124, NM_214816, NM_212874, NM_001098193, NM_213260, NM_001082885, NM_001077763, NM_131778, NM_213637, NM_001099230, NM_199963, NM_200601, NM_001076645, NM_131320, NM_001004569, NM_001089409, NM_001077538, NM_200592, NM_130986, NM_201164, NM_131558, NM_001009893, NM_001045158, NM_203427, NM_131749, NM_001012480, NM_001082861, NM_173270, NM_001030236, NM_001099990, NM_001080052, NM_001002872, NM_153667, NM_200367, NM_001039829, NM_200372, NM_001033735, NM_001030163, NM_001005590, NM_001024386, NM_001001815, NM_131404, NM_001083022, NM_200884, NM_001007324, NM_198804, NM_131069, NM_001098730, NM_001006079, NM_001003562, NM_131855, NM_201309, NM_201123, NM_001018151, NM_001020477, NM_001005955, NM_001077757, NM_200997, NM_214820, NM_001020729, NM_194374, NM_199558, NM_001002510, NM_213641, NM_201175, NM_200794, NM_214803, NM_213372, NM_001045105, NM_001013523, NM_001045235, NM_131765, NM_213164, NM_131427, NM_001039992, NM_001077728, NM_001076571, NM_205711, NM_199867, NM_200843, NM_199681, NM_001099264, NM_001003521, NM_212702, NM_001017724, NM_213277, NM_001020627, NM_131337, NM_001077391, NM_205690, NM_131068, NM_001082831, NM_199569, NM_214687, NM_200675, NM_001080017, NM_201186, NM_001031841, NM_001012497, NM_181601, NM_001077570, NM_199770, NM_201504, NM_001017747, NM_214736, NM_131377, NM_205661, NM_199753, NM_001020525, NM_201495, NM_001077805, NM_001015068, NM_213028, NM_001044319, NM_001002157, NM_001020660, NM_001045300, NM_199675, NM_001002223, NM_199611, NM_001037576, NM_199866, NM_200438, NM_198366, NM_001045156, NM_199996, NM_001089464, NM_213085, NM_200759, NM_001034976, NM_213207, NM_131882, NM_001001825, NM_200174, NM_001002150, NM_198814, NM_131669, NM_200955, NM_205549, NM_212562, NM_001034183, NM_001044824, NM_001018156, NM_001008631, NM_199707, NM_213325, NM_001037422, NM_194379, NM_001045071, NM_194384, NM_001017819, NM_001040330, NM_001037405, NM_001077760, NM_207081, NM_001080663, NM_001083060, NM_001040299, NM_001077804, NM_181439, NM_213370, NM_001013460, NM_001003470, NM_130978, NM_001077599, NM_212651, NM_200116, NM_001014348, NM_001037384, NM_001001836, NM_200836, NM_001020512, NM_001003639, NM_001002668, NM_213544, NM_131031, NM_001044710, NM_213145, NM_001002205, NM_200104, NM_001003419, NM_131340, NM_201509, NM_131401, NM_001030077, NM_200881, NM_001025545, NM_200668, NM_001079973, NM_212610, NM_213185, NM_001037404, NM_198978, NM_199824, NM_001002380, NM_212787, NM_213168, NM_205593, NM_212723, NM_199616, NM_131037, NM_001020648, NM_001037118, NM_131502, NM_213300, NM_200639, NM_213430, NM_001077282, NM_201094, NM_001045362, NM_001007283, NM_001004548, NM_131025, NM_131684, NM_001002667, NM_001099261, NM_001024073, NM_001013298, NM_001002329, NM_213144, NM_001012263, NM_201143, NM_001080168, NM_212893, NM_001002334, NM_200419, NM_001077652, NM_200892, NM_131481, NM_001005980, NM_001018149, NM_178303, NM_212685, NM_001004541, NM_131143,

NM_001017704, NM_131459, NM_001024377, NM_213071, NM_001005772, NM_205743, NM_213262, NM_001033587, NM_001005304, NM_201322, NM_001002109, NM_001020612, NM_001098391, NM_001077302, NM_001017756, NM_001045260, NM_001007051, NM_001018142, NM_200858, NM_200082, NM_001020468, NM_001045108, NM_001020659, NM_001045177, NM_199823, NM_001045052, NM_001003411, NM_131053, NM_212717, NM_131114, NM_131773, NM_199679, NM_001024162, NM_001077606, NM_131435, NM_199875, NM_131626, NM_001020591, NM_131886, NM_001076557, NM_001005601, NM_213155, NM_131232, NM_001002215, NM_130912, NM_001080054, NM_182859, NM_130981, NM_200834, NM_199672, NM_201345, NM_200305, NM_213351, NM_001004677, NM_213481, NM_212887, NM_001024388, NM_001044963, NM_131810, NM_131220, NM_001039971, NM_001001947, NM_173238, NM_200609, NM_200423, NM_001077781, NM_178302, NM_001080679, NM_001044821, NM_001077629, NM_001043321, NM_213347, NM_200710, NM_001040379, NM_001077549, NM_181764, NM_001030264, NM_200441, NM_131216, NM_001089560, NM_212758, NM_001080011, NM_001007364, NM_001082933, NM_001002097, NM_001045301, NM_001099259, NM_131733, NM_001076632, NM_212746, NM_001002415, NM_200155, NM_001002484, NM_213448, NM_001089401, NM_198210, NM_213453, NM_131716, NM_001002212, NM_001004539, NM_001034179, NM_200143, NM_001004605, NM_213375, NM_200334, NM_213311, NM_201499, NM_001080029, NM_199953, NM_001089583, NM_001012315, NM_212656, NM_001082826, NM_001033595, NM_199806, NM_200790, NM_199811, NM_152967, NM_199537, NM_199728, NM_001020603, NM_199919, NM_001002573, NM_001044870, NM_001002110, NM_212696, NM_201480, NM_213459, NM_201142, NM_001002096, NM_001008594, NM_001030251, NM_131857, NM_199643, NM_201130, NM_212880, NM_131715, NM_001080045, NM_001077715, NM_212919, NM_213435, NM_001006094, NM_001002197, NM_200588, NM_001077767, NM_001080753, NM_213232, NM_201101, NM_001037682, NM_200980, NM_001044942, NM_213149, NM_001080085, NM_001089570, NM_213024, NM_001013533, NM_001040377, NM_213007, NM_001045311, NM_001020519, NM_001077738, NM_199649, NM_198869, NM_200295, NM_001017798, NM_001002746, NM_001040370, NM_001044982, NM_001002222, NM_200278, NM_213130, NM_199642, NM_199772, NM_199833, NM_001001949, NM_001002399, NM_194380, NM_001007458, NM_001075113, NM_130934, NM_199625, NM_214682, NM_201580, NM_001044762, NM_001005582, NM_001083083, NM_199608, NM_213165, NM_001089498, NM_212906, NM_131433, NM_001007767, NM_001100001, NM_214709, NM_213552, NM_212642, NM_001044858, NM_199731, NM_001039996, NM_001045310, NM_131867, NM_131277, NM_001080197, NM_212755, NM_001017728, NM_001045171, NM_001001818, NM_200005, NM_205718, NM_213176, NM_001077253, NM_001044756, NM_001045081, NM_001045203, NM_212991, NM_212587, NM_001080621, NM_001098256, NM_001017900, NM_212653, NM_200187, NM_130921, NM_001089428, NM_131496, NM_001002643, NM_213485, NM_214713, NM_131736, NM_213135, NM_131212, NM_199713, NM_214770, NM_198338, NM_200479, NM_213461, NM_001080184, NM_130944, NM_200927, NM_001083548, NM_001020640, NM_001012257, NM_200932, NM_001044833, NM_213505, NM_001082829, NM_001013493, NM_001100405, NM_001030092, NM_001007777, NM_213371, NM_001098189, NM_205639, NM_001099417, NM_001002576, NM_131370, NM_001077301, NM_001008606, NM_001077370, NM_199802, NM_001080667, NM_212574, NM_214707, NM_199979, NM_201336, NM_001013317, NM_200096, NM_200157, NM_001082992, NM_001098738, NM_001082906, NM_001004607, NM_001100086, NM_131116, NM_001080041, NM_001003433, NM_201104, NM_200978, NM_131038, NM_001017580, NM_131572, NM_212646, NM_194421, NM_212707, NM_200706, NM_001017619, NM_213223, NM_199610, NM_213478, NM_001002511, NM_199275, NM_001007105, NM_001002051, NM_001005939, NM_001076650, NM_001002558, NM_001003534, NM_200173, NM_001002688, NM_001001592, NM_001044855, NM_001040304, NM_001030192, NM_213402, NM_001020579, NM_200937, NM_001098485, NM_001002086, NM_131595, NM_001002147, NM_001025499, NM_001002152, NM_201514,

Supplemental Research Data

Shkumatava et al., page 41

NM_198067, NM_001008780, NM_131448, NM_131509, NM_194366, NM_131184,
NM_001045472, NM_001039817, NM_131627, NM_201488, NM_199881, NM_199543